



PACT

Port of Amsterdam Collaboration Tool

28-12-2021

8 DECENT WORK AND ECONOMIC GROWTH



9 INDUSTRY, INNOVATION AND INFRASTRUCTURE



17 PARTNERSHIPS FOR THE GOALS



oneUP



Port of Amsterdam

Problem

What can we improve?

Insufficient use of port infrastructure leads to unnecessary delays and subsequently economical losses for all the stakeholders involved in the shipping logistics.

Low accuracy of Estimated Departure Times (ETD) for vessels was recognized as the main cause of slack in the port infrastructure planning, and inefficiencies caused by that.





GOAL

“SHARE **DEPARTURE TIME DATA** EARLIER IN THE
PROCESS TO INCREASE **INCREASE PREDICTABILITY** OF
DEPARTURES & **UTILIZE RESOURCES** MORE
EFFICIENTLY.”

Solution

A platform/tool that:

Improves information position for agents by integrating shared data from key partners in the logistic chain

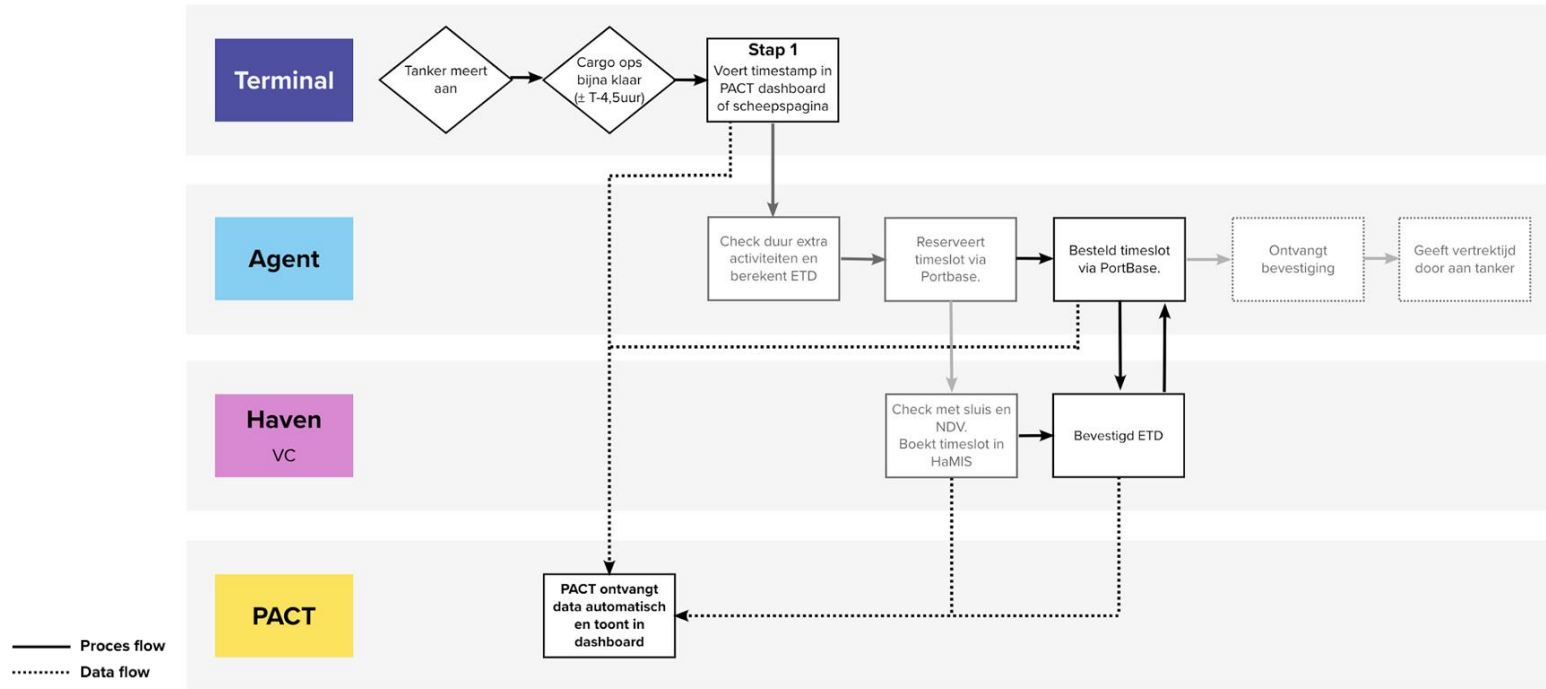
This facilitates an improved resourceplanning for the sealocks and nautical services.

Condition:

- A safe & secure platform
- The aim to be fully automated to lower impact on operations



Process





PACT

ALL-IN-ONE DASHBOARD

Dashboard in which users see status updates of departing ships.

Via API's data will be automatically shared. During pilot, will communicate ETCF manually.

Notification emails will be sent automatically when status is changed

Future: Delays & unnecessarily planned slots will be calculated and shown

The dashboard displays the following data:

SHIP	LOCATION	SHIP MOVEMENT	ETCF	TIME UNTIL ETD	ETD	PLANNING STATUS
Departure - Not open to order yet						
UNDINE	AMO 6	DEPARTING	NOT OPEN TO ORDER	IN PROCESS
BOXER	AMO 1	DEPARTING	NOT OPEN TO ORDER	IN PROCESS
Departure - Open to order/Ordered (> ETCF 70%)						
RAMSES	AMO 2	DEPARTING	17/03 23:00	AWAITING ETD	AWAITING ORDER	OPEN TO ORDER
EL SALVADOR	AMO 4	SHIFTING	17/03 13:00	AWAITING ETD	AWAITING ORDER	OPEN TO ORDER
TURM OIL	AMO 9	DEPARTING	17/03 11:00	+6:00	17/03 15:00	ORDERED
STI PONTIAC	AMO 7	DEPARTING	17/03 05:00	+6:00	17/03 11:00	ORDER CONFIRMED
STI MARVEL	AMO 10	DEPARTING	17/03 04:30	+6:00	17/03 10:30	ORDER CONFIRMED
Departed						
ARCTICA HAV		DEPARTING			05:00	17/03/2021

Objectives

Value of accurate planning

Reduce unnecessary claim of port resources

Reduce delays by reducing & unnecessarily planned slots

Increase communication efficiency among port stakeholders

Status



Experiment 1 & 2

Testen van desirability, feasibility en viability aannames.

Nadruk ligt op *desirability*.

Prototype is handmatig:

- Dashboard en spelregels om datapunten te delen tussen ketenpartijen (e.g. Verwachte ligduur, verhalende reis ja/nee, ETCF70% en 90%).



Testable MVP

Testen van desirability, feasibility en viability aannames tijdens pilot.

Nadruk ligt op *feasibility* en de *desirability* van nieuwe features.

MVP is een werkend product met:

- Dashboard
- Een koppeling tussen systeem terminal en PACT om **ETCF70% en 90%** automatisch te delen
- Handmatige invoer ETCF90%



Usable MVP

Testen en ontwikkelen van nieuwe features gebaseerd op resultaten vorige fase.

MVP met meer features:

- Dashboard
- Automatisch data delen
- Evt. uitbreiding naar het delen van andere data en timestamps
- Evt. uitbreiding naar andere schepen



Marketable MVP

Go-to-market strategie bepalen en het testen en ontwikkelen van nieuwe features.

Questions?

Reach out to us at:

Ronne.bakker@portofamsterdam.com

0031615251759

