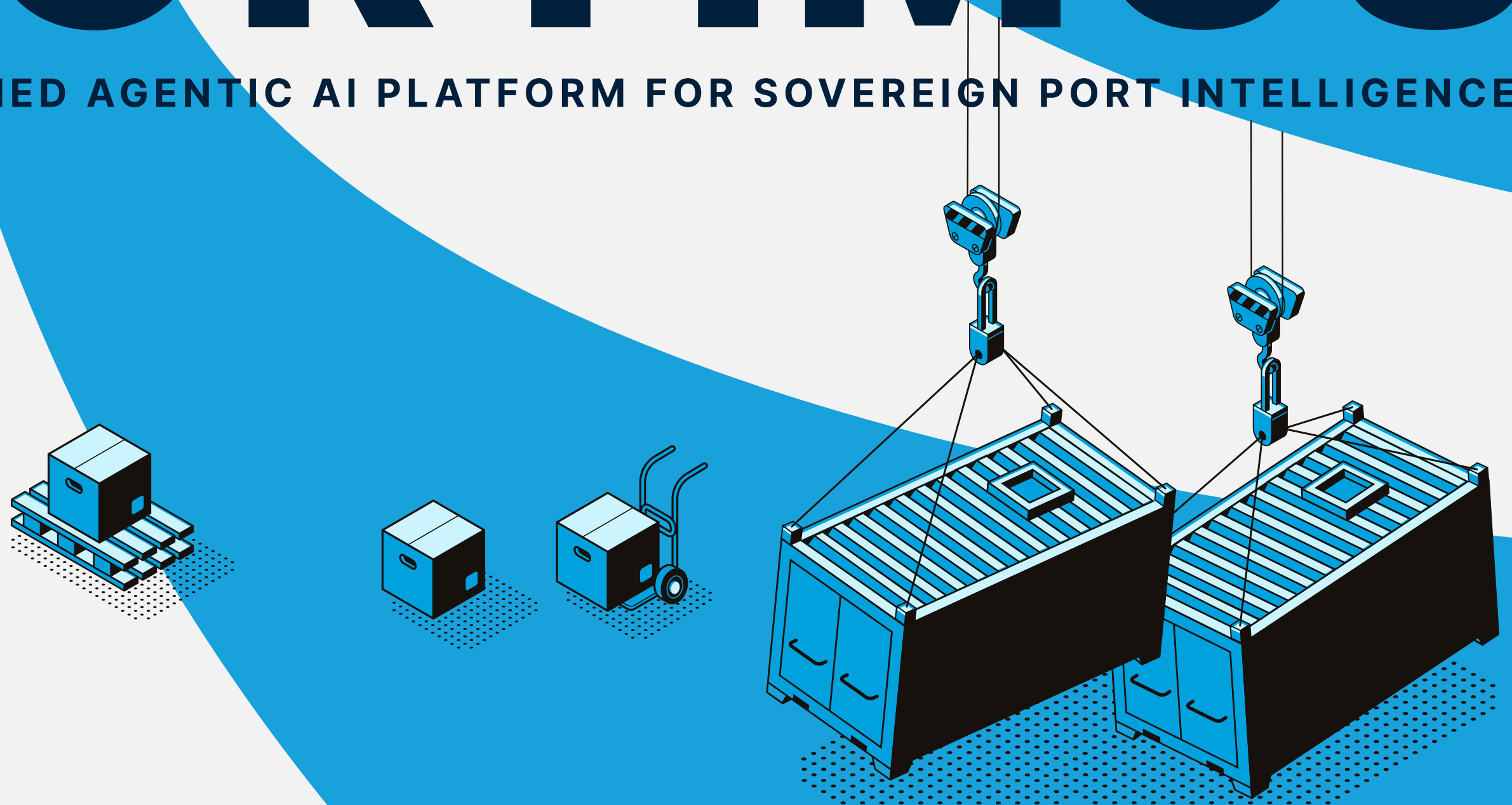


# PORTIMUS

TANGER MED AGENTIC AI PLATFORM FOR SOVEREIGN PORT INTELLIGENCE





# TANGER MED AT A GLANCE



**AFRICA AND MEDITERRANEAN'S #1 CONTAINER PORT**



**#1 MOROCCAN LOGISTICS PLATFORM**



**11M+ TEUS AND 160M+ TONS HANDLED PER YEAR**



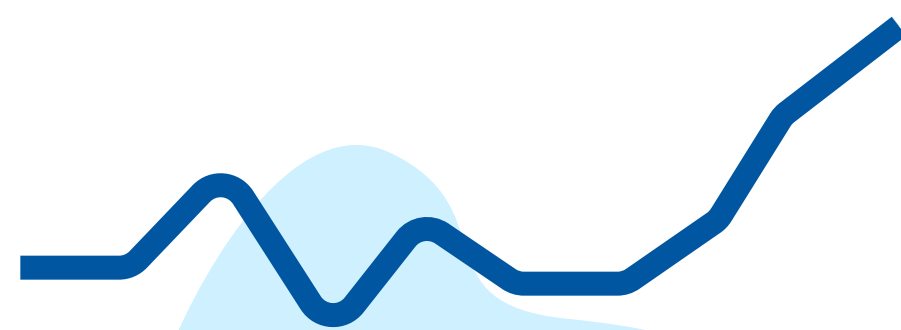
**SERVES 180+ SHIPPING LINES**



**STRATEGIC MEDITERRANEAN HUB**



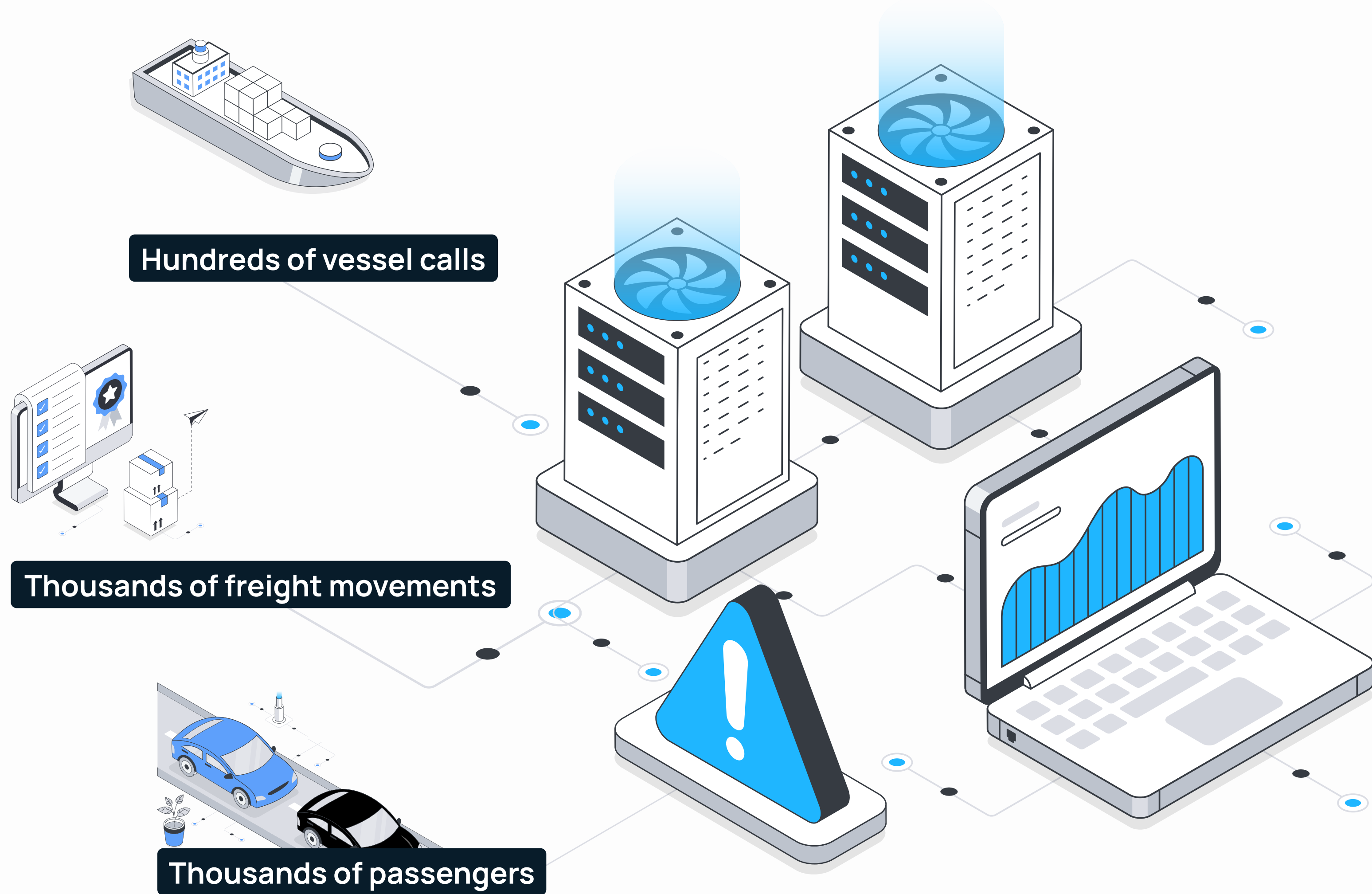
**CONNECTED TO 77 COUNTRIES**



**THE SCALE OF OPERATIONS DEMANDS**



**A NEW LEVEL OF INTELLIGENCE**



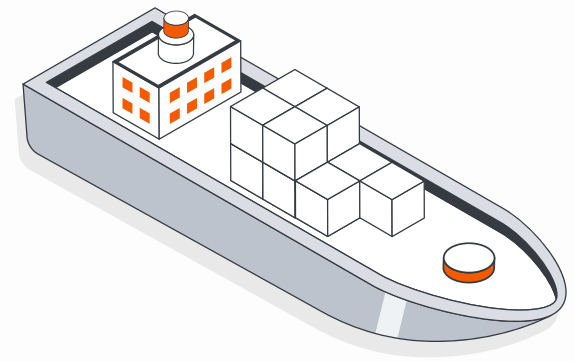
Operational systems generate

**MASSIVE  
HETEROGENEOUS  
SILOED**

DATASETS DAILY

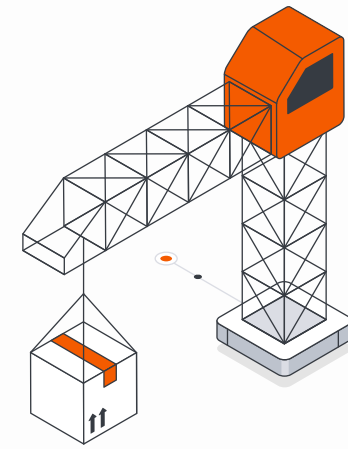
Data exists  
but intelligence is  
missing!

# DATA IS THE RAW MATERIAL POWERING PORTIMUS



## PMIS (Port Management Information System)

Vessel calls, port dues, berth allocation, and agent declarations.



## Cargo Flow Information System

freight unit journey management.



## Track & Trace System

real-time freight unit localization through SAS entry/exit RFID antennae.



## Ecosystem Data Exchanges

data exchanged with port ecosystem stakeholders.



## Passenger Management System

passenger and vehicle flows, ferry schedules, and seasonal traffic peaks.

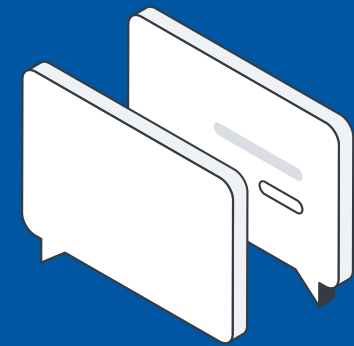
RICH

OPERATIONAL

ACCESSIBLE

Data is the raw material powering  
PORTIMUS.

# THE DATA CHALLENGES BEHIND THE SYSTEM



**EACH SYSTEM SPEAKS A  
DIFFERENT LANGUAGE**



**HETEROGENEOUS DATABASE  
TECHNOLOGIES AND SCHEMAS**

**DIVERSE STAKEHOLDER DATA  
EXCHANGE FORMATS**

**REAL-TIME AND BATCH DATA  
PROCESSING FLOWS**

**IOT, RFID, AND OPERATIONAL  
SENSOR DATA STREAMS**

**APIS, EVENT LOGS, AND ENTERPRISE  
MESSAGING SYSTEMS**

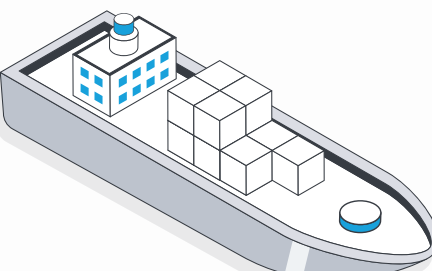
**NO UNIFIED QUERY LAYER**

**UNSTRUCTURED HISTORICAL DATA**

**NO SYSTEM INTEROPERABILITY**

# DATA MANAGEMENT PLATFORM

## SOURCES



PMIS



CARGO FLOW



TRACK & TRACE

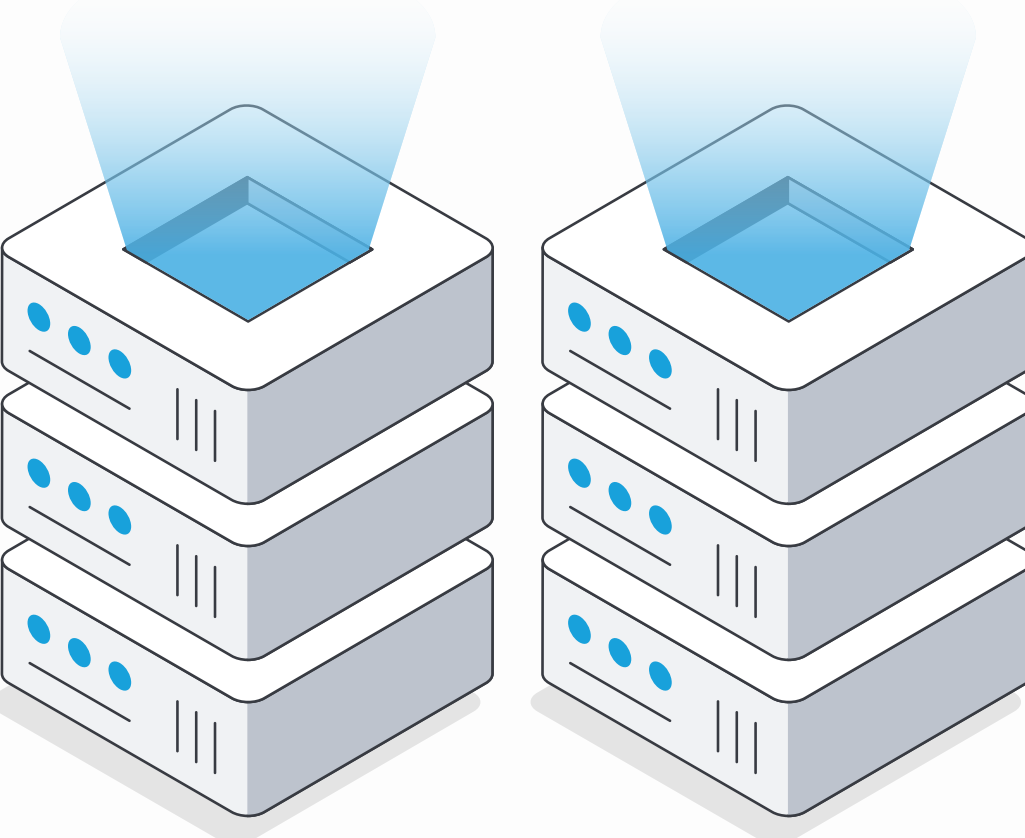


PASSENGER MGMT

## INGESTION



## UNIFIED DATA LAYER



## VISUALIZATION

DATA AND AI BUSINESS CASES

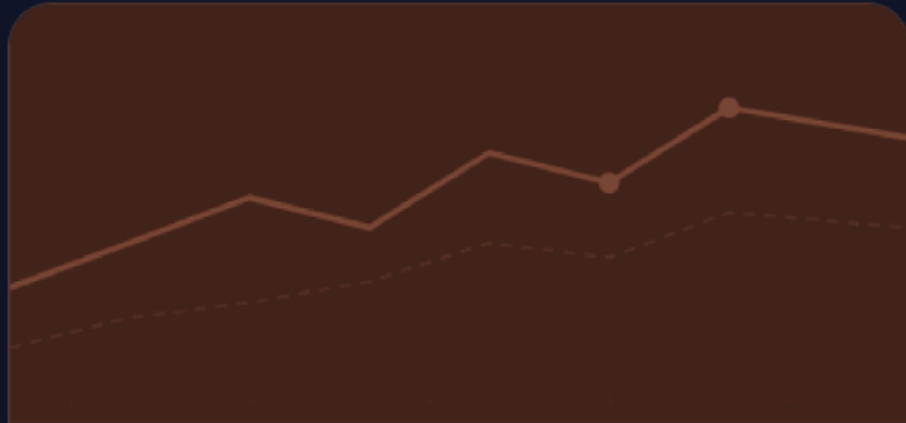


# DATA MANAGEMENT PLATFORM

- Customer E-Reputation
- Freight Intelligence
- Passenger Intelligence
- Sûreté et Sécurité

## APPLICATIONS DISPONIBLES

### Bienvenue sur la plateforme



#### Customer E-Reputation

Attribution d'un score aux clients fret basé sur des features (volumes, régularité, valeur, risques) afin de segmenter les clients et prioriser les actions commerciales et opérationnelles.

- 4 tableaux de bord
- Mis à jour il y a 9h36min
- Export PDF / Excel

Scoring des clients Fret   Scoring des PASS

Accéder →



#### Freight Intelligence

Une plateforme de reporting et de dashboarding dédiée au suivi des flux de fret et des opérations de passage portuaire, offrant une visibilité consolidée des KPIs de performance. Elle exploite les données de scanning et de traçabilité pour générer des insights opérationnels permettant d'identifier les goulots d'étranglement et d'optimiser la performance logistique globale.

- 5 tableaux de bord
- Mis à jour à 09:36

KPIs portuaires   Reporting I/E   Traçabilité

Accéder →



#### Passenger Intelligence

Une plateforme analytique avancée intégrant des capacités de prédiction, de dashboarding et de suivi des KPIs, offrant une vision 360° et prospective des flux passagers. Elle génère des insights opérationnels permettant d'anticiper les pics d'activité, d'optimiser les ressources et d'améliorer la performance globale des opérations.

- 1 tableaux de bord

Predictions   Dashboards   Insights  
Optimisation

Accéder →



#### Sûreté et Sécurité

Utilisation de l'IA et du machine learning pour renforcer la sûreté et la sécurité portuaire au sein de Tanger Med, à travers l'analyse prédictive, la détection d'anomalies et l'optimisation des dispositifs de contrôle.

- Océrisation
- Analyse prédictive
- Contrôle

Sûreté   Sécurité   IA

Accéder →

FROM

# DATA PLATFORM

TO

# AGENTIC AI



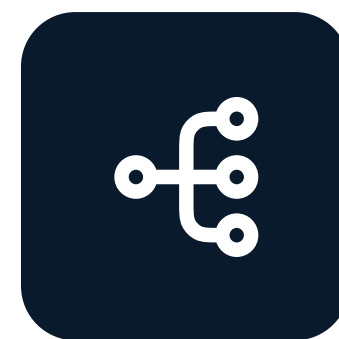
## Natural Language

SQL (structured data) through agentic reasoning.



## Natural Language

Vector Search (documents, regulations, procedures) through RAG.



## Multi-step reasoning:

agents chain queries, cross-reference sources, and synthesize answers.

The data platform is queryable but not conversational, proactive, or self-explanatory. **PORTIMUS** adds an intelligence layer on top



# TECHNICAL ARCHITECTURE



**Sovereign:** Data and models stay under full port ownership and control.



**On-premise:** Runs entirely on Tanger Med infrastructure — no external cloud.



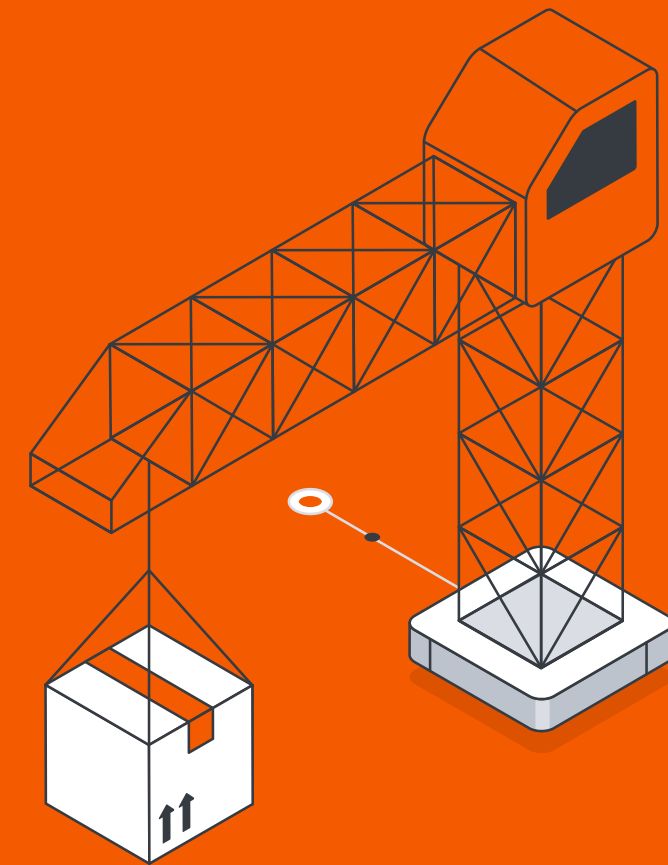
**Production-grade:** Built for real operations: secure, monitored, and resilient.



**Agentic by design:** Agents reason and use tools, not just retrieve answers.



# FREIGHT AGENT

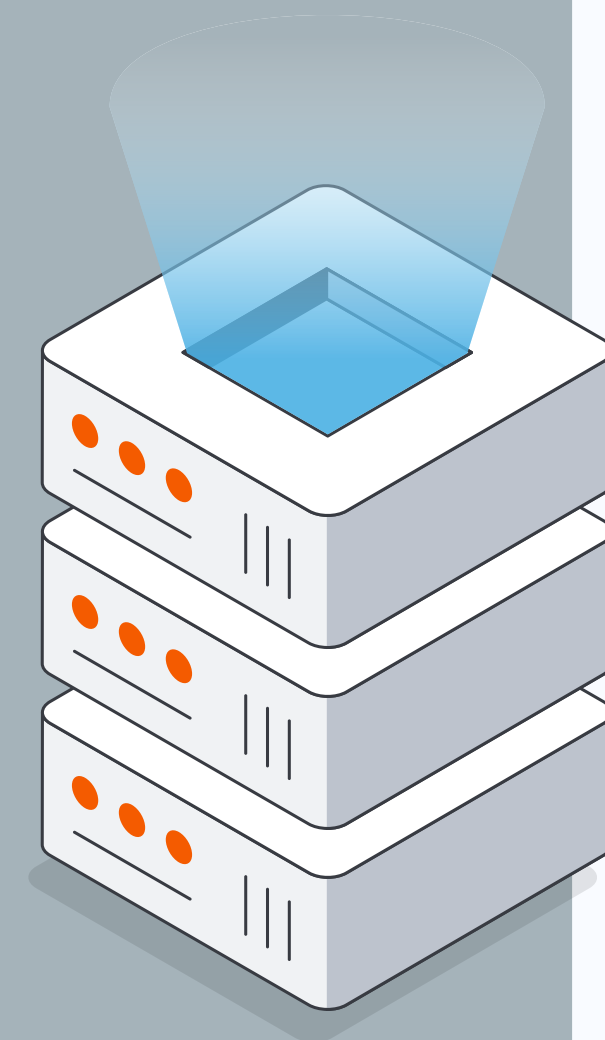


End-to-end freight unit tracking across the port logistics chain.

---

## Data Sources

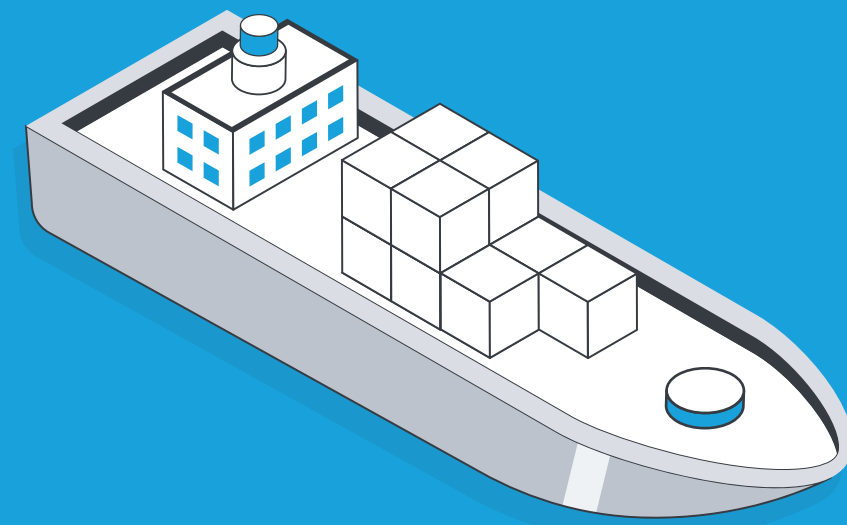
- Unit journey and movement tracking across the port ecosystem
- Cargo visibility and operational control systems
- Customs, regulatory, and trade facilitation platforms
- Logistics partner and stakeholder data exchanges
- IoT, RFID, and field sensing infrastructure



## Key Capabilities

- Real-time monitoring of unit lifecycle
- End-to-end tracking of inspection workflows
- Proactive anomaly detection
- Natural language querying for operational insights

# MARITIME AGENT

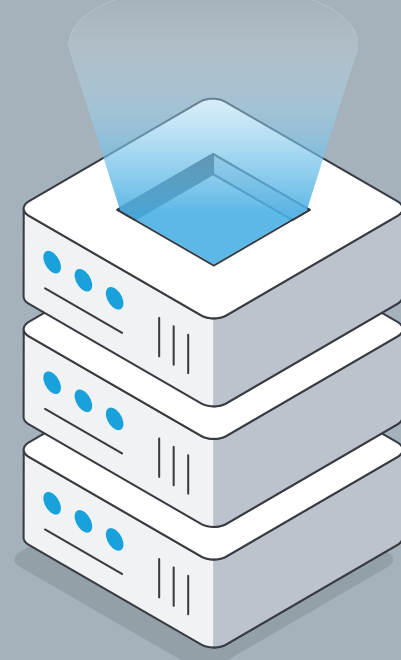


Vessel call management, port resource optimization, and maritime compliance.

---

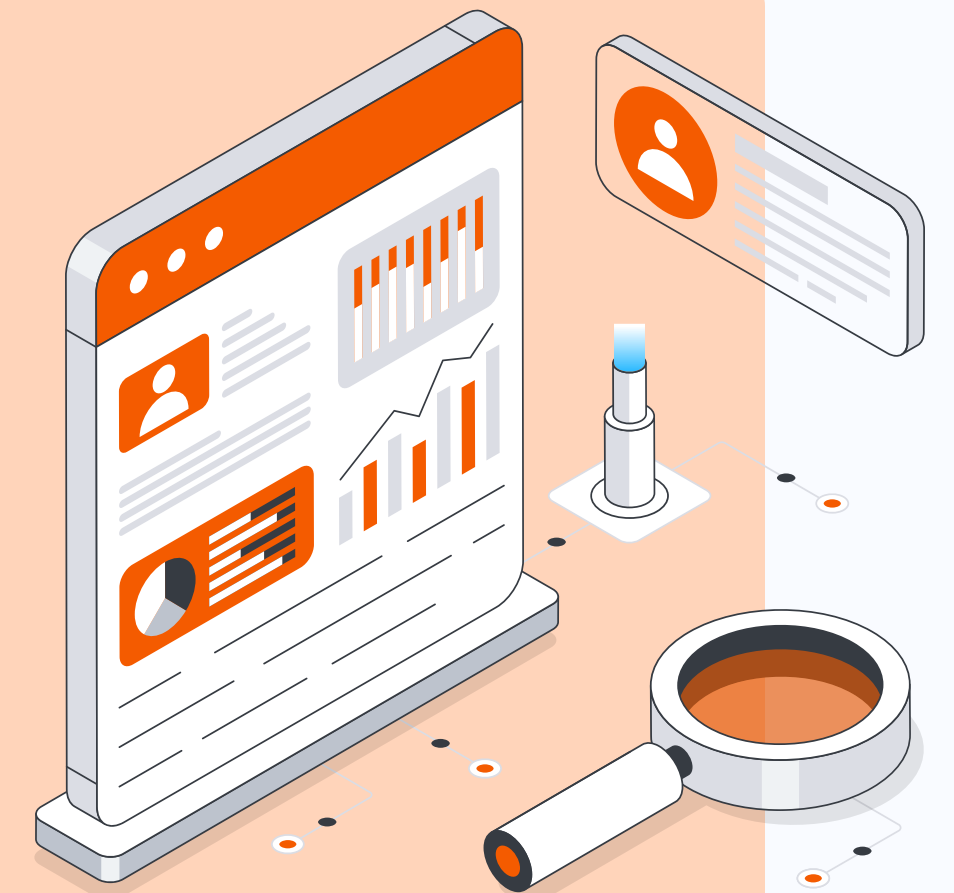
## Data Sources

- PMIS vessel calls
- Berth allocation
- Bunkering orders
- Tugboat assignments
- Terminal reservations.

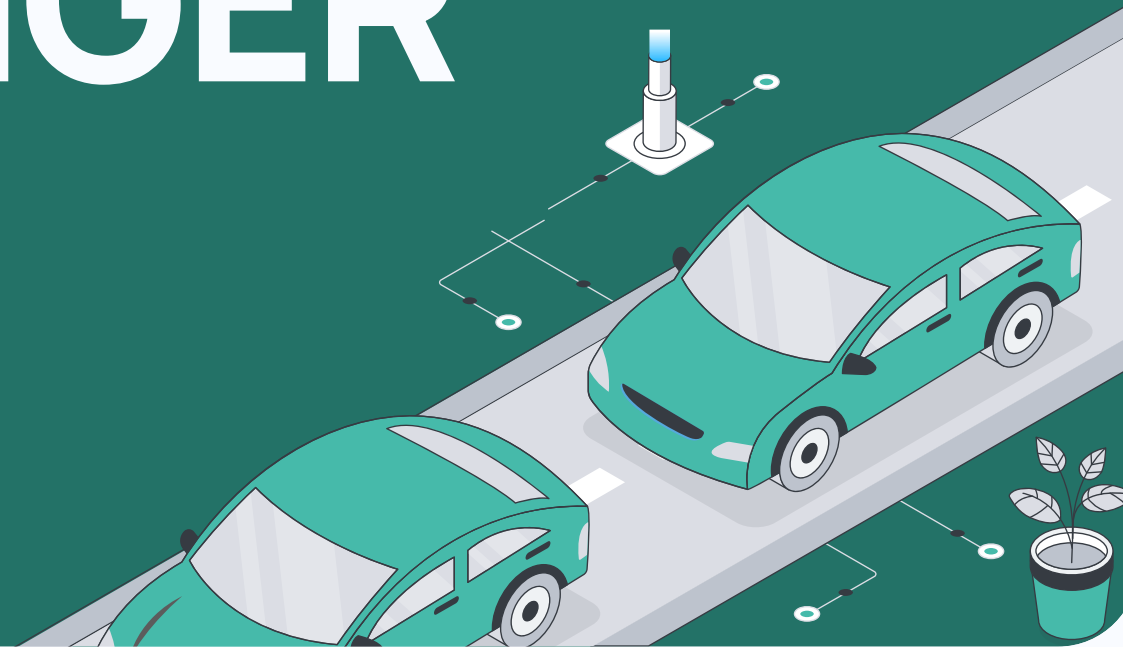


## Key Capabilities

- Dashboard of active and upcoming vessel calls
- Bunkering and tugboat revenue tracking.
- Terminal occupancy analytics
- Documents compliance monitoring
- Port dues calculation support and anomaly detection.

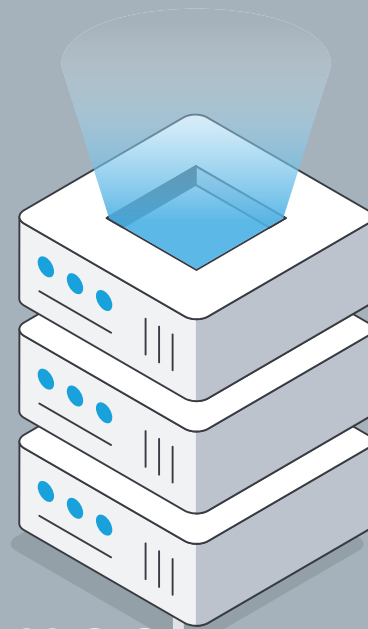


# PASSENGER AGENT



Passenger and vehicle flow  
management across ferry  
terminals.

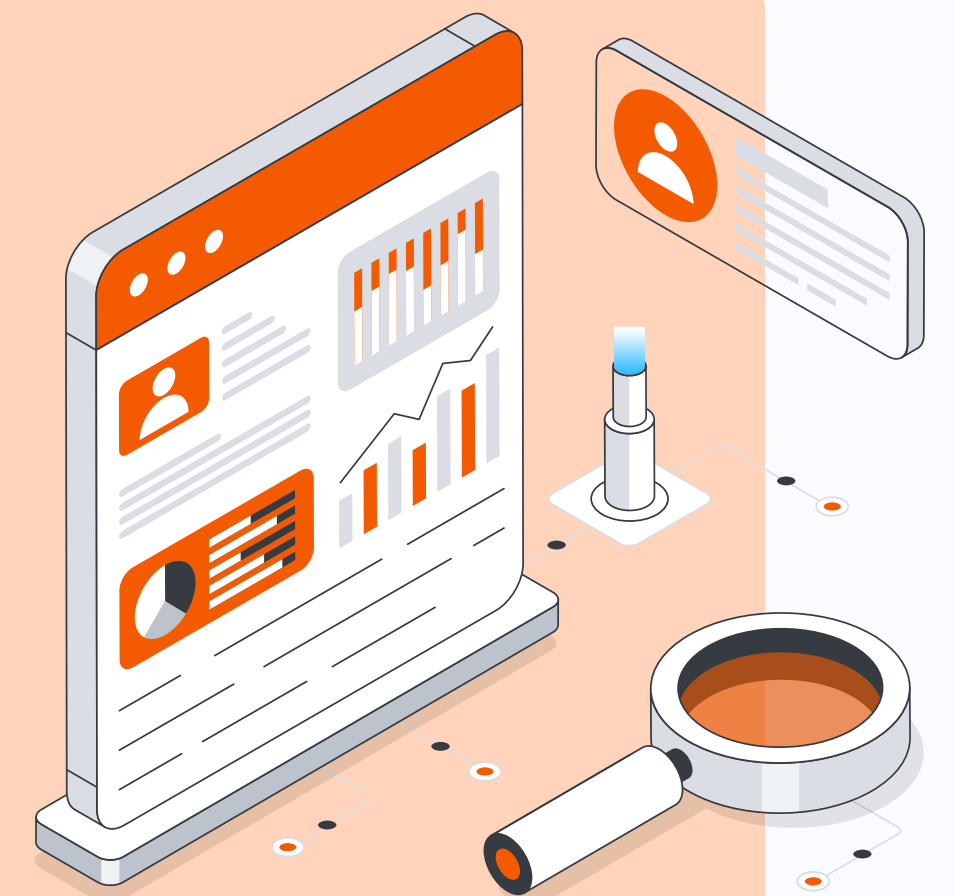
## Data Sources



- Passenger Management System
- vehicle counts
- Ferry schedules
- Seasonal traffic data.

## Key Capabilities

- Real-time passenger and vehicle monitoring.
- Seasonal peak forecasting
- Cross-agency coordination support
- Flow anomaly detection





# SUSTAINABLE DEVELOPMENT GOALS

**08**

**DECENT WORK &  
ECONOMIC GROWTH**

**Smarter operations  
sustain port-driven  
growth.**

**09**

**INDUSTRY, INNOVATION  
& INFRASTRUCTURE**

**Sovereign AI on  
critical port  
infrastructure.**

**11**

**SUSTAINABLE CITIES &  
COMMUNITIES**

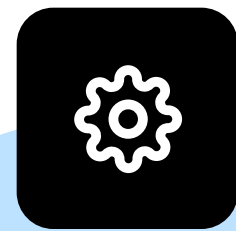
**Smoother passenger  
and freight flows.**

**17**

**PARTNERSHIPS FOR  
THE GOALS**

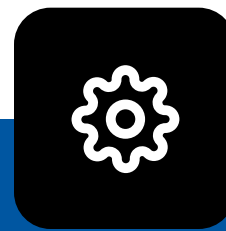
**Shared intelligence  
across agencies**

# ADDED VALUE SUMMARY



## Operational

- ✓ Real-time visibility
- ✓ Fewer manual lookups
- ✓ Capacity planning



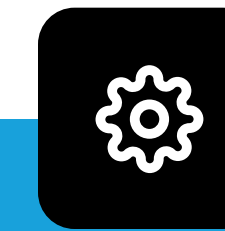
## Strategic

- ✓ Historical analytics
- ✓ Trend detection
- ✓ Decision-making



## Compliance

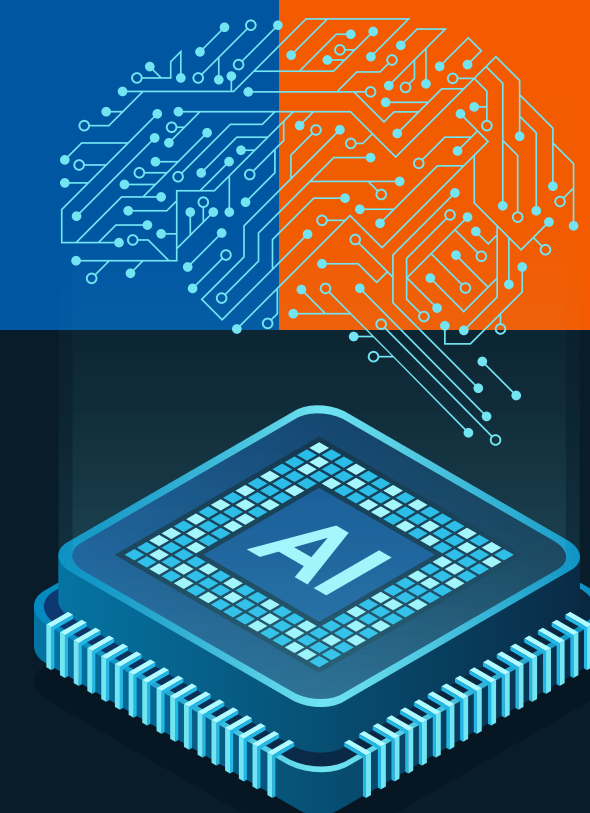
- ✓ Regulatory monitoring
- ✓ Embedded in workflows
- ✓ Audit-ready by default



## Human

- ✓ Operators act, not search
- ✓ Answers in plain language
- ✓ Time back for judgement

PORTIMUS does not replace port operators



It gives them the **intelligence** they deserve.

# This is PORTIMUS

PORTIMUS

Agentic Port Intelligence · Tanger Med

Freight

Maritime

Passenger

How many export units crossed the port in June 2026? Plot a chart by day.

FREIGHT AGENT · ICEBERG.TMPA.FRET.AMP

Reasoning · Qwen3-35B

```
SELECT DATE(date_dep AT TIME ZONE 'Africa/Casablanca') AS day,  
       COUNT(*) AS export_units  
FROM iceberg.tmpa_fret.AMP  
WHERE no_amp LIKE '%E%'  
       AND no_amp NOT LIKE 'EM%'  
       AND date_dep >= TIMESTAMP '2026-06-01 00:00:00'  
       AND date_dep < TIMESTAMP '2026-07-01 00:00:00'  
GROUP BY 1 ORDER BY 1
```

Total exports · June

**48,312**

↑ +6.2% vs May

Daily average

**1,610**

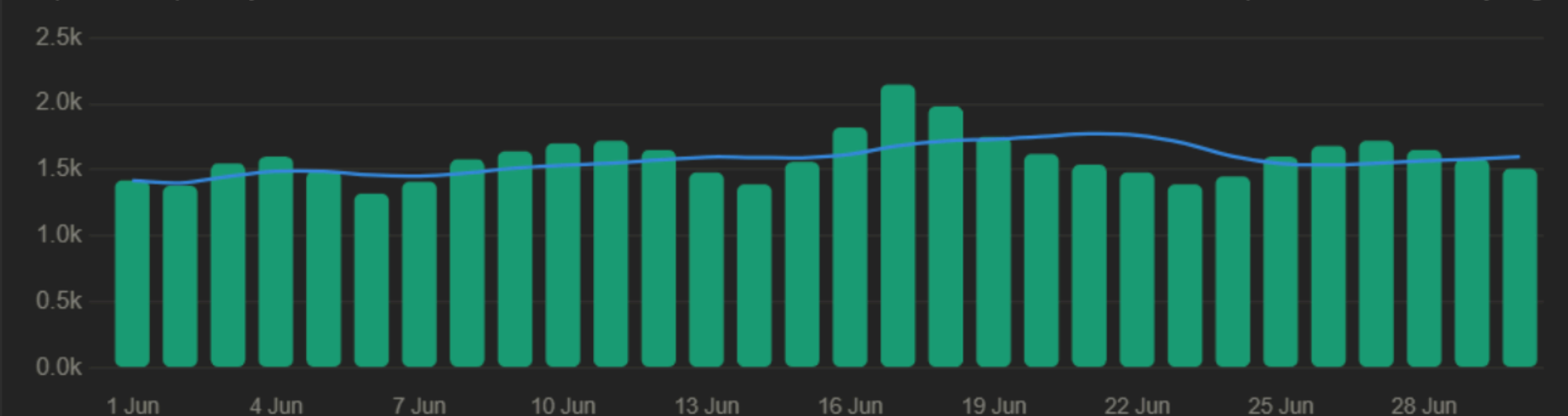
Peak: June 17

Active days

**30 / 30**

No downtime

Export units per day — June 2026



In June 2026, **48,312 export units** crossed the port — up 6.2% vs May. Activity peaked on **June 17** at 2,145 units, driven by end-of-week vessel departures. No operational downtime was recorded.

[Imports June ↗](#)

[By terminal ↗](#)

[Top clients ↗](#)

[vs 2025 ↗](#)

Ask anything about freight, maritime or passenger operations...

