



NATURPORTS

Integrating Nature-Based Solutions in Port Ecosystem Restoration
Photografic Dossier



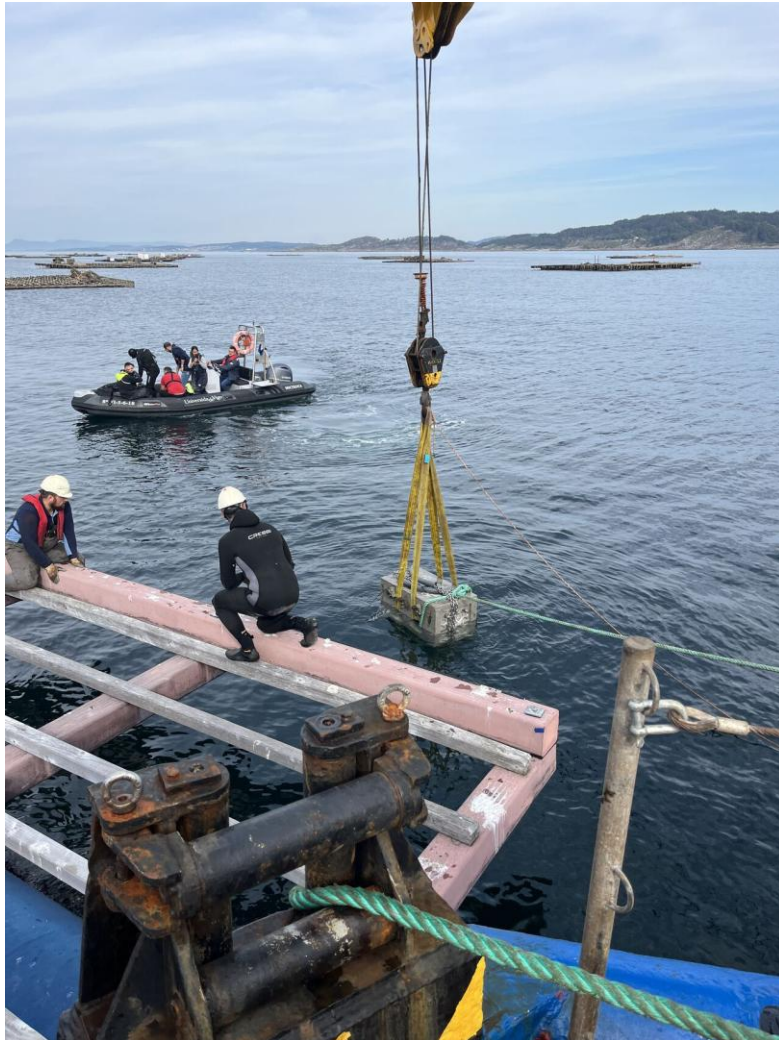
Pilot 1: Rocky reefs according to wave exposure

INSTALLATION PROCESS OF BIOMIMETIC STRUCTURES



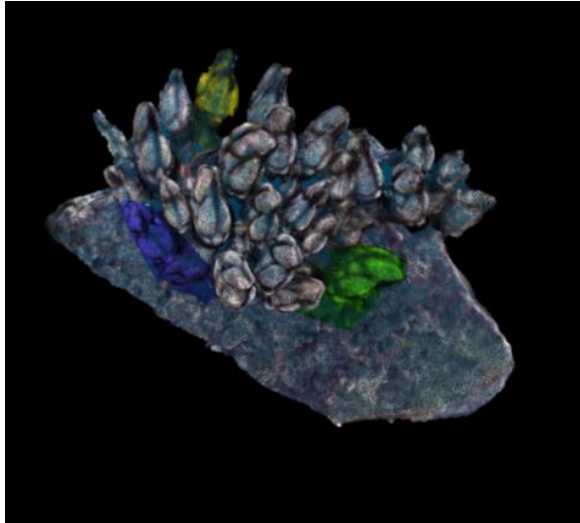
Pilot 1: Rocky reefs according to wave exposure

INSTALLATION PROCESS OF BIOMIMETIC STRUCTURES



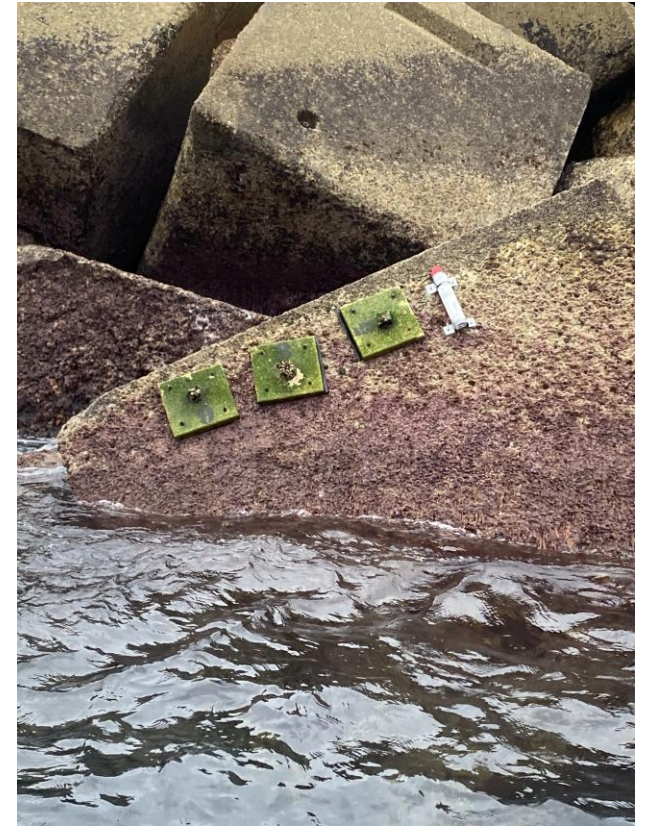
Pilot 2: Transformation of docks into barnacle breeding zones

INSTALLATION PROCESS



Pilot 2: Transformation of docks into barnacle breeding zones

INSTALLATION PROCESS



Pilot 3: Seagrass meadow restoration strategy

INSTALLATION PROCESS



Coconut fibers, used as substrate for transplanting Zostera specimens.



Transplanted Zostera specimens

DEVELOPMENT OF NATURPORTS PROJECT DISSEMINATION ACTIVITIES

