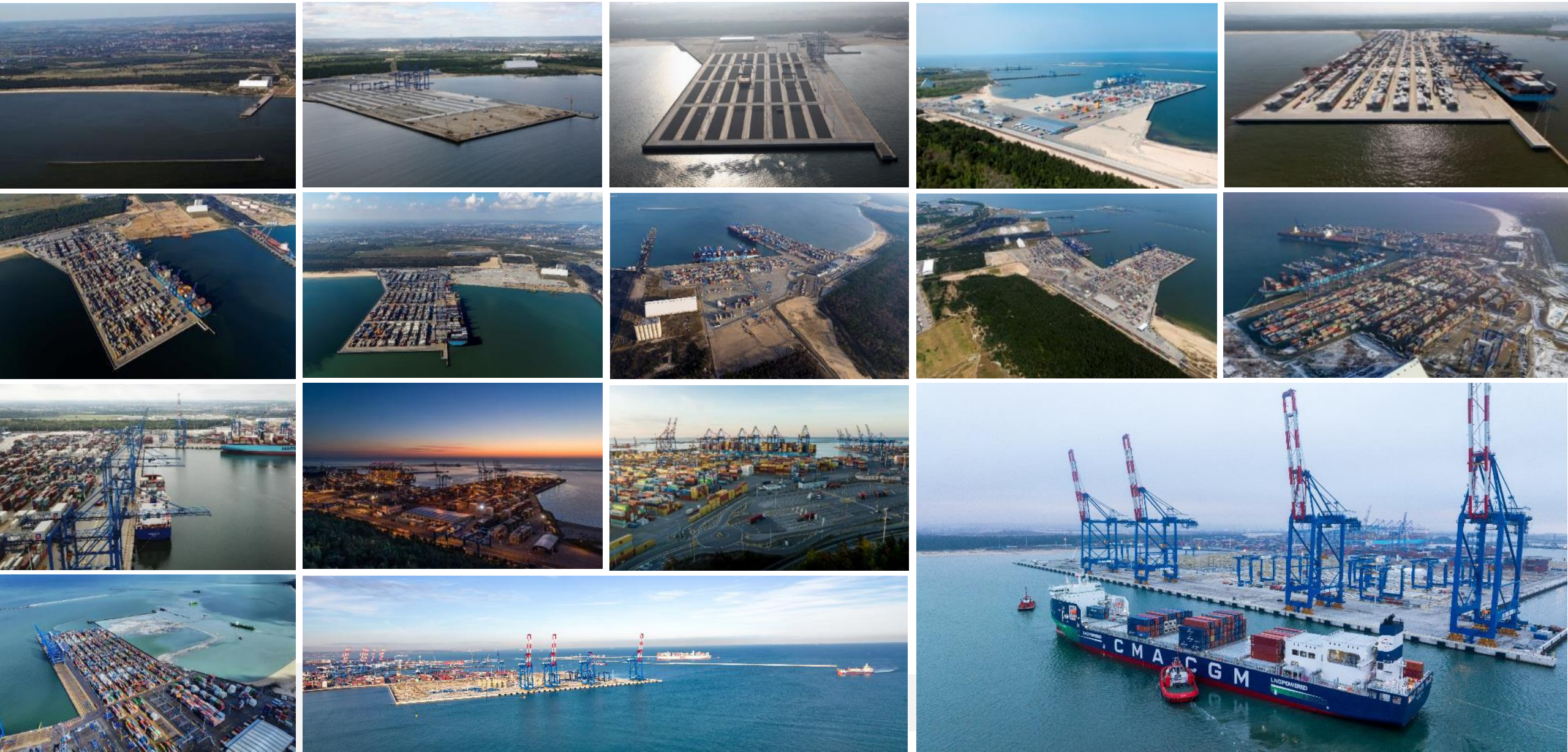


April 2025

We are the Baltic Hub

Baltic Hub: History

From an idea to the largest container terminal in the Baltic Sea



Baltic Hub: Who we are?

Management Board and Shareholders

SHAREHOLDERS STRUCTURE:

40%

PSA International (PSA)

PSA International (PSA) is a leading global port operator and trusted partner to cargo stakeholders. Currently, PSA's portfolio comprises over 70 deepsea, rail and inland terminals, across more than 180 locations in 45 countries – including two flagship port operations in Singapore and Belgium. Drawing on the deep expertise and experience from a diverse global team, PSA collaborates with its customers and partners to develop world-class port ecosystems and deliver innovative supply chain solutions to accelerate the shift towards sustainable trade. Visit us at www.globalpsa.com, or follow us on LinkedIn and Facebook (@globalpsa).

30%

Polish Development Fund

The Polish Development Fund (PFR) is a financial group which offers instruments supporting the development of companies, local governments and individuals, and invests in sustainable social development and national economic growth. The mission of PFR as a Polish promotional financial institution is to implement programs enhancing the long-term investment and economic potential and supporting equal opportunities and environmental protection.

30%

IFM Global Infrastructure Fund

IFM Investors is a global institutional funds manager with US\$145 billion under its management as of 31 March 2024. Established more than 25 years ago and owned by 17 Australian pension funds, IFM Investors' interests are deeply aligned with those of its investors. Investment teams in Australia, Europe, North America and Asia manage institutional strategies across debt investments, infrastructure, listed equities and private equity. IFM Investors has offices in thirteen cities: Melbourne, Sydney, New York, Houston, Tokyo, Hong Kong, Seoul, London, Amsterdam, Milan, Berlin, Warsaw and Zurich.

MANAGEMENT BOARD STRUCTURE:

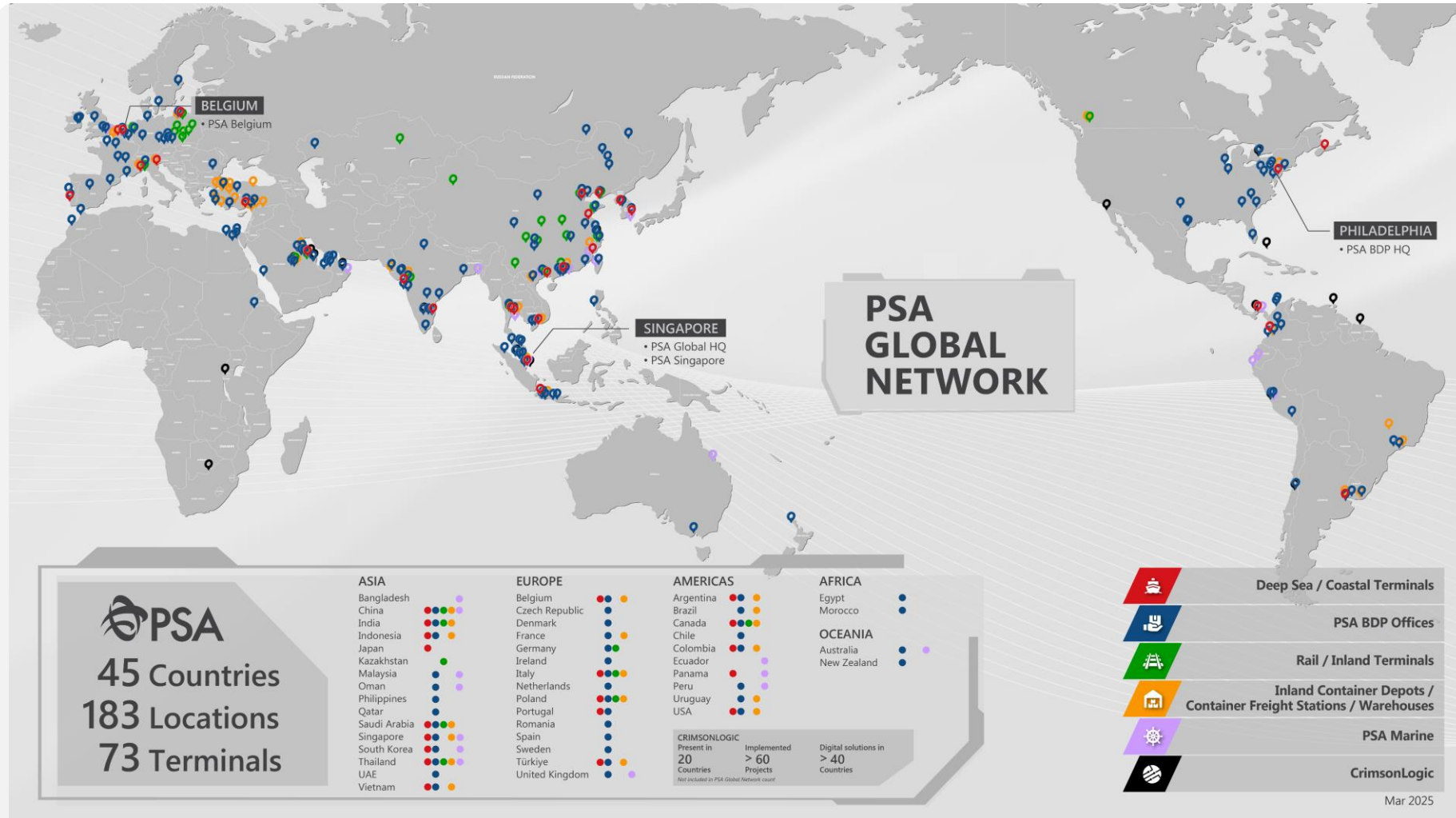
Jan Van Mossevelde CEO

Krzysztof Perdzyński acting CFO

Ross Clarke COO

PSA Global Network

45 Countries, 183 Locations, 73 terminals



Baltic Hub: Sustainable for the Future

Maximum efficiency with minimum emission

Reduce greenhouse gas emissions* by 50% by 2030 compared to 2019 values

Sustainability issues considered in the planning and implementation of new investments (e.g., low CO2 concrete)

Baltic Hub (BHCT)
Quality Certified:
ISO 50001, ISO 45001
ISO 14001, ISO 9001, EMAS

Diesel Prime Movers
diesel terminal tractors to be replaced with low-emission ones by 2030

Successive electrification of all yard cranes

Reductions in CO2 emissions and saving energy

Constantly growing fleet of electric / hybrid cars (fleet / pool cars)

Development and implementation of the first ESG Strategy for 2024-2026

Optimize yard operations to reduce energy/fuel consumption and thus emissions

Purchase of green energy (91,678 MWh CO2-free electricity from 2021(**))

Carbon Neutral by 2050

*means reduction of Scope1 and Scope 2 emissions according to GHG protocol definitions
(**) 20,035 MWh in 2021, 21,513 MWh in 2022 and 24,000 MWh in 2023, 26,130 MWh in 2024.

Baltic Hub: Annual Capacity 4,5 mln TEU*

2,24mln TEU handled in 2024



AUTOMATED GATE
615 000 trucks per annum
Paperless VBS

640
vessel calls
per annum

14
STS cranes

1 400 +
employees

1 062
reefer connections

7
STS cranes

1.5MLN TEU
of semi-automated yard with
20 RMG's (under construction)

T2

T1

T3

50
RTG's and eRTG's
incl. 5 automated cranes

1 072
reefer connections

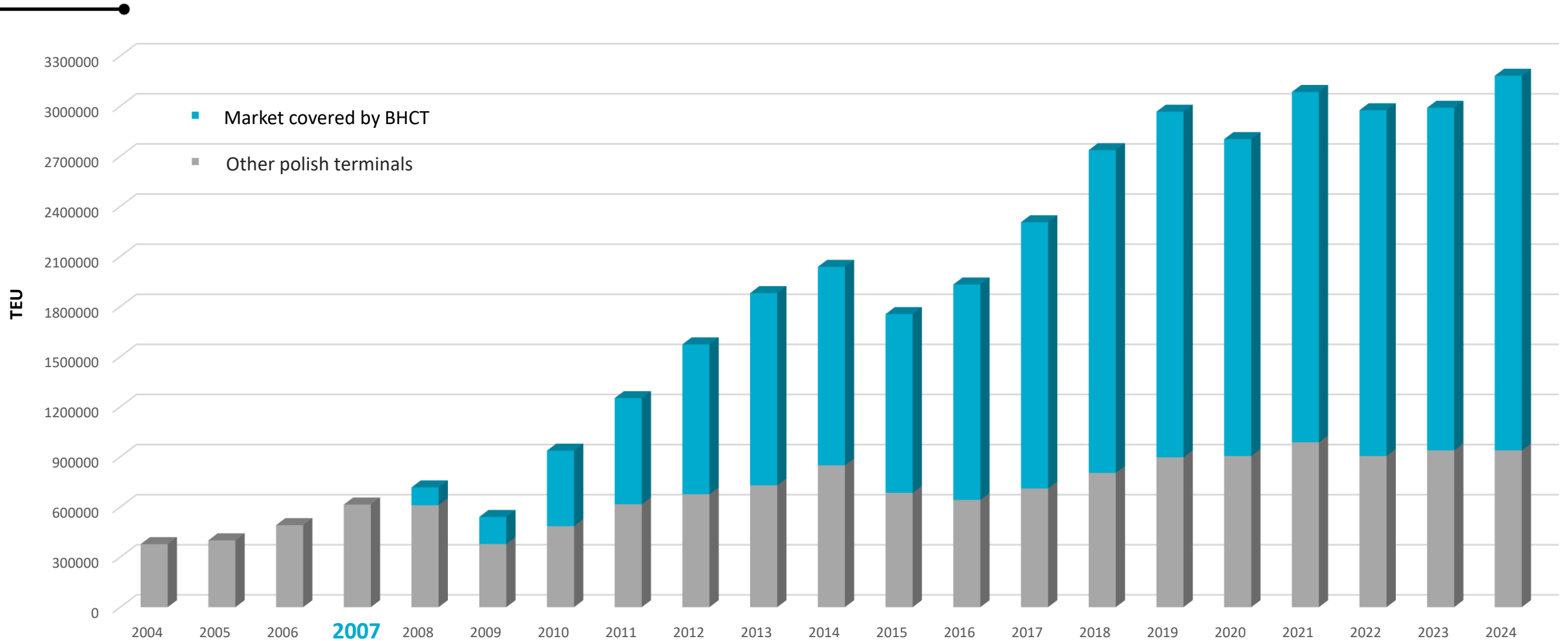
8 200 SQM
Warehouse
(CFS)

RAILWAY TERMINAL
8 200 trains per annum
4 RMGs
7 tracks, total length 5,25 km

* after completion of T3 investment

Baltic Hub: Volume Development

Polish container terminals 2004-2024 (TEU)



Baltic Hub: Volume Development

Container turnover in Top 10 Baltic container ports in 2022-2024 [TEU]

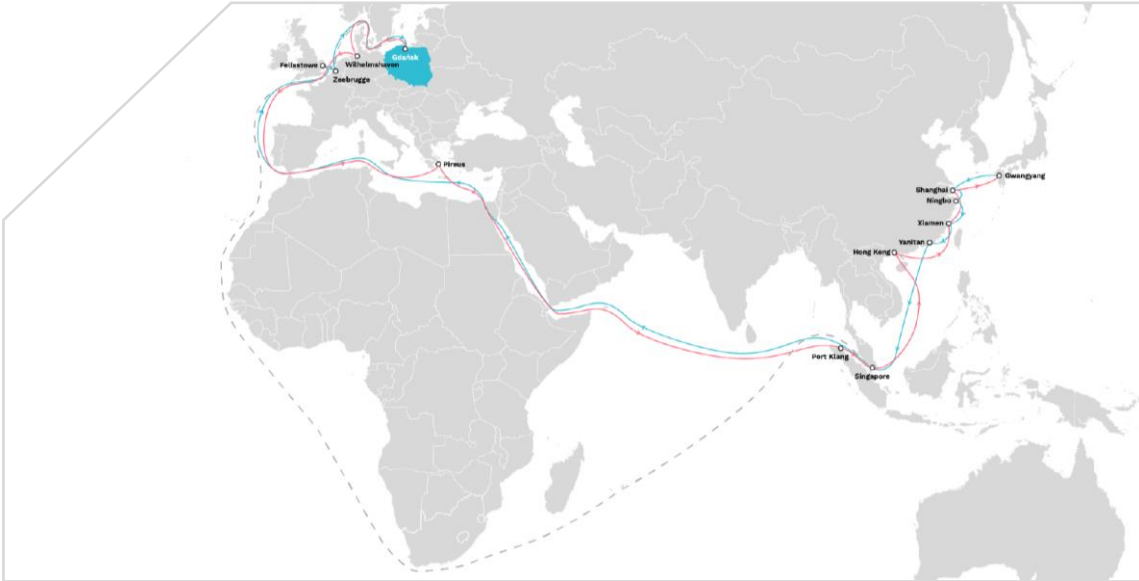
| | 2022 | 2023 | 2024 | | 2024/2023 | Direct or T/S |
|----------------|------------------|------------------|------------------|---|--------------|---------------|
| Gdansk | 2 072 122 | 2 020 037 | 2 248 764 | ↑ | 9.69% | Direct |
| St. Petersburg | 925 196 | 1 046 488 | 1 374 000 | ↑ | 31.30% | T/S |
| Klaipeda | 1 047 941 | 1 050 804 | 1 069 678 | ↑ | 1.80% | Direct |
| Gdynia | 914 448 | 873 892 | 974 586 | ↑ | 11.52% | Direct & T/S |
| Gothenburg | 884 900 | 914 000 | 909 000 | ↓ | -0.55% | Direct |
| Aarhus | 759 000 | 673 781 | 659 886 | ↓ | -2.06% | Direct |
| Hamina-Kotka | 629 332 | 617 181 | 571 097 | ↓ | -7.47% | T/S |
| Riga | 460 689 | 465 391 | 501 851 | ↑ | 7.83% | T/S |
| Helsinki | 491 793 | 451 760 | 444 000 | ↓ | -1.72% | T/S |
| Tallinn | 267 752 | 221 405 | 261 822 | ↑ | 18.25% | T/S |
| Total | 8 452 952 | 8 368 085 | 9 016 708 | | 7.75% | |

Source: Port Monitor Report - Impact of the geopolitical situation on the largest Baltic ports in 2024


Baltic Hub: Deepsea calls

Ocean Alliance and CMA CGM

OCEAN ALLIANCE

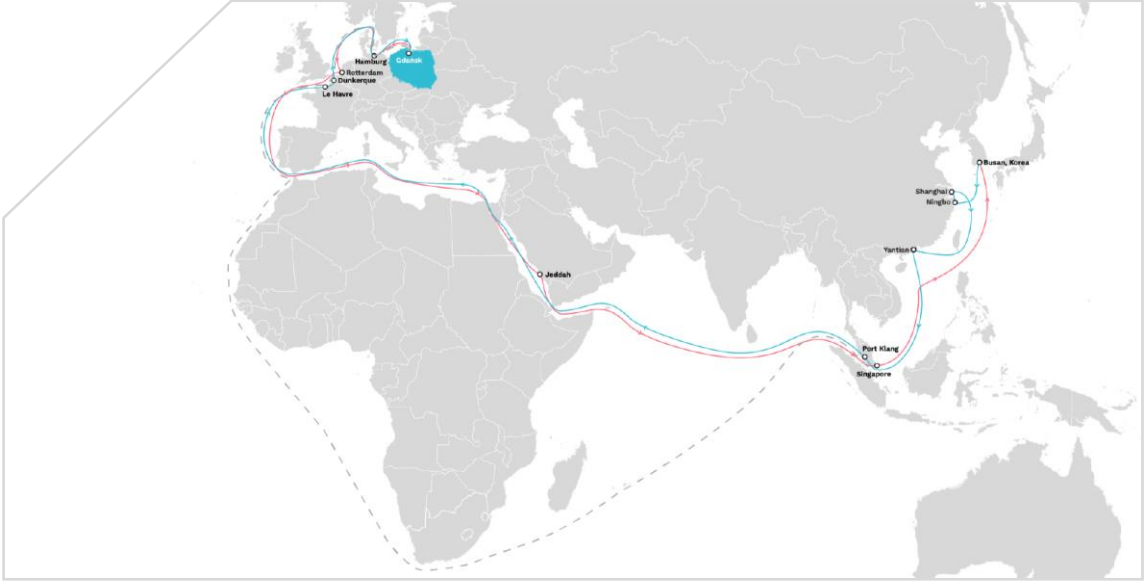


CHINA – SINGAPORE – POLAND



| | | | |
|------------|-------------|-------------|------------|
| OOCL | COSCO | CMA-CGM | EVERGREEN |
| LL1 | AEU1 | FAL5 | NE1 |

CMA CGM FAL 1



CHINA – MALAYSIA – POLAND



| |
|--------------|
| CMA CGM |
| FAL 1 |

Baltic Hub: Deepsea calls

ALBATROS and BRITANNIA

ALBATROS



CHINA – SINGAPORE – POLAND



MSC
ALBATROS

BRITANNIA



CHINA – VIETNAM – POLAND

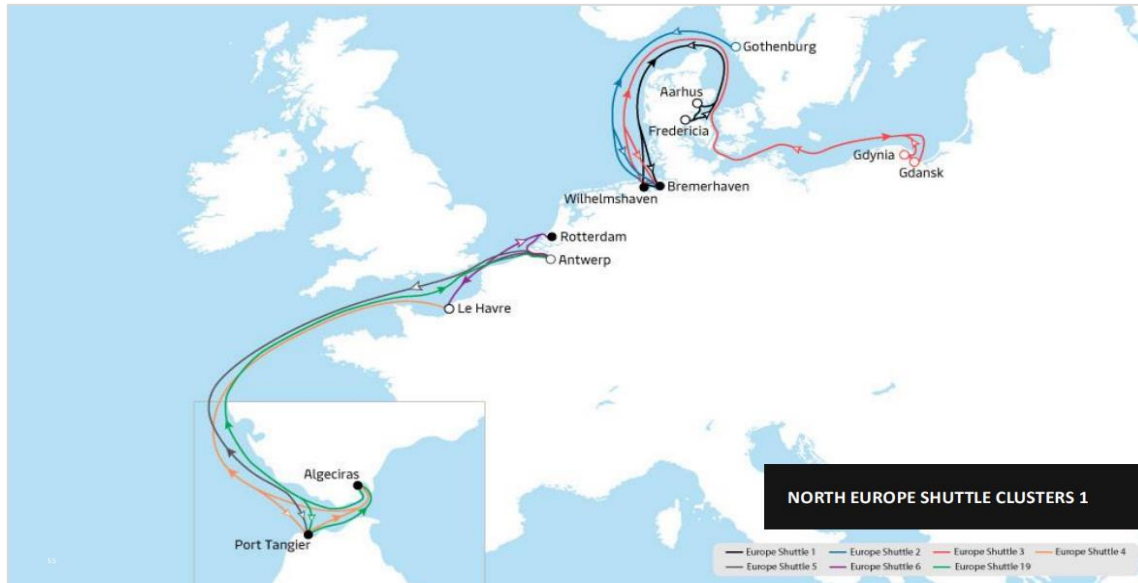


MSC
BRITANNIA

Baltic Hub: MAERSK shuttle services

GEMINI

GEMINI



CHINA – POLAND



MAERSK
ES3

MAERSK
ES15

Baltic Hub: Regional Hub

Locational advantage

- **Hub Port** with unique location
- **Regular Feeder and Short Sea Connections** with most of the Baltic and North Sea ports
- **640+ block trains** served per month
- **Direct services to Czech Republic 6/week**
 - PASKOV – RCO
 - OSTRAVA – METRANS
 - OSTRAVA – MEDLOG
- **Connection to Ukraine**
(via Zamosc, Slawkow, Medyka, Mostyska, Wola Baranowska, Dorohusk, Dobra, Malaszewicze)
- Rail / road ratio:

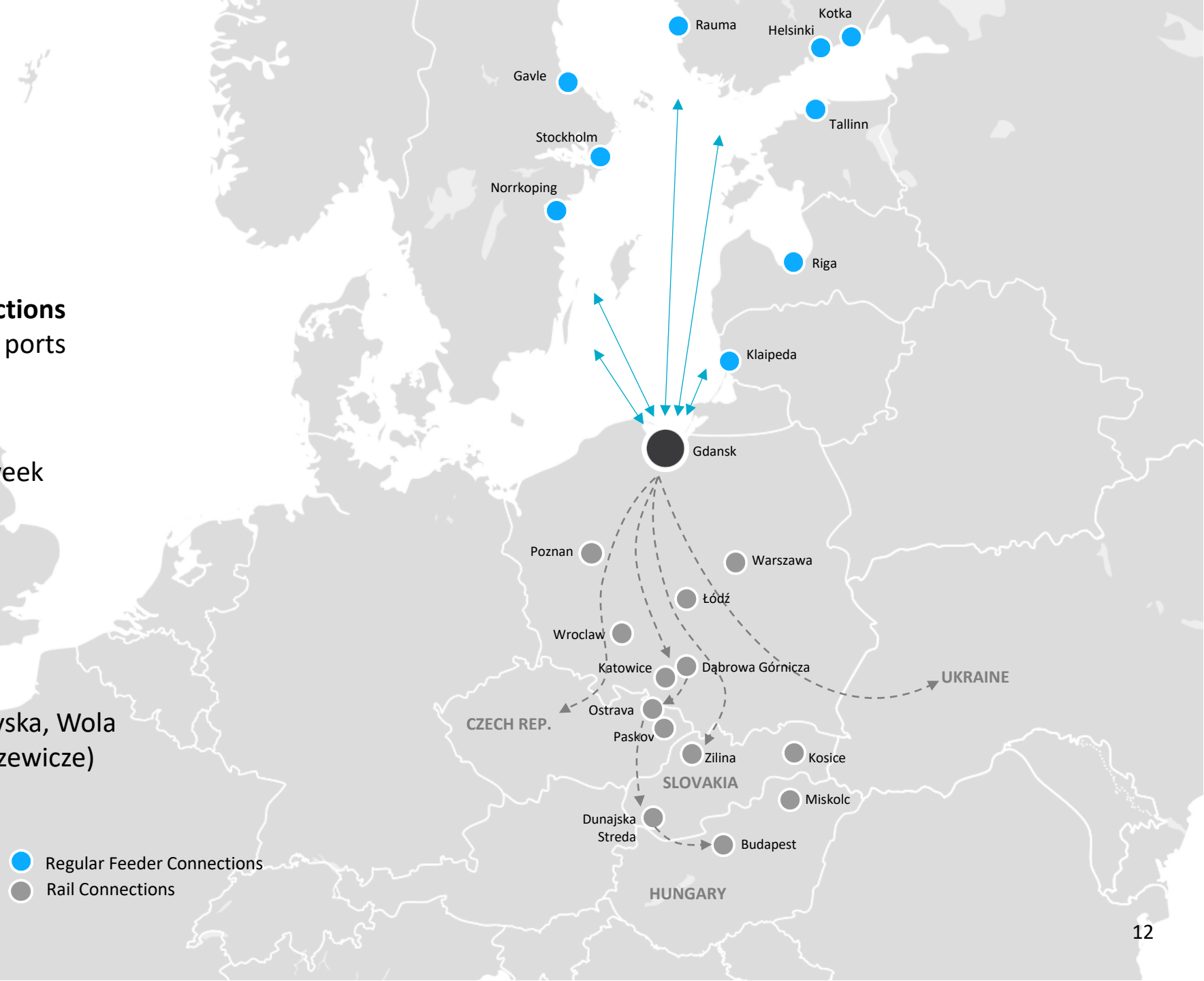
32%



68%



- Regular Feeder Connections
- Rail Connections



Baltic Hub: Rail is the Future

Rail as a key to hinterland development



750m
length of each track
(lengthened from 618m)

7
rail tracks

4 X RMG CRANES
WITH OCR
delivered and operating

5.25KM
total length of rail tracks
(extended from 2.5km)

Railway siding enabling more goods by rail, lowering the carbon footprint and reducing road congestion | +25% more rail YoY

Baltic Hub: CFS Warehouse

Reloading goods which volume, weight or other conditions do not allow containerization



CFS SERVICES:

- Warehouse and yard storage
- Stuffing and stripping of containers
- Lashing cargo in a container
- Handling of general cargo
- Inspections
- Break bulk and Project cargo
- IMO Cargo

Break Bulk Services:

- Luxury Goods
- Military equipment
- Various types of steel structures
- Reels
- Turbines
- Specialized vehicles

Baltic Hub: CFS Warehouse

Reloading goods which volume, weight or other conditions do not allow containerization



Steel coils



Aluminum billets



Aluminum ingots



Vehicles



Small cargo



OOG Cargo



Breakbulk cargo



Cargo

Baltic Hub: CFS Warehouse

Special Projects



Military vehicles



Military vehicles



Military vehicles



Military vehicles



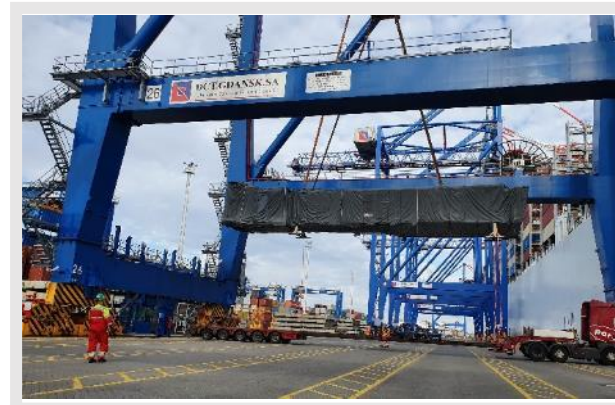
Galleon



Galleon



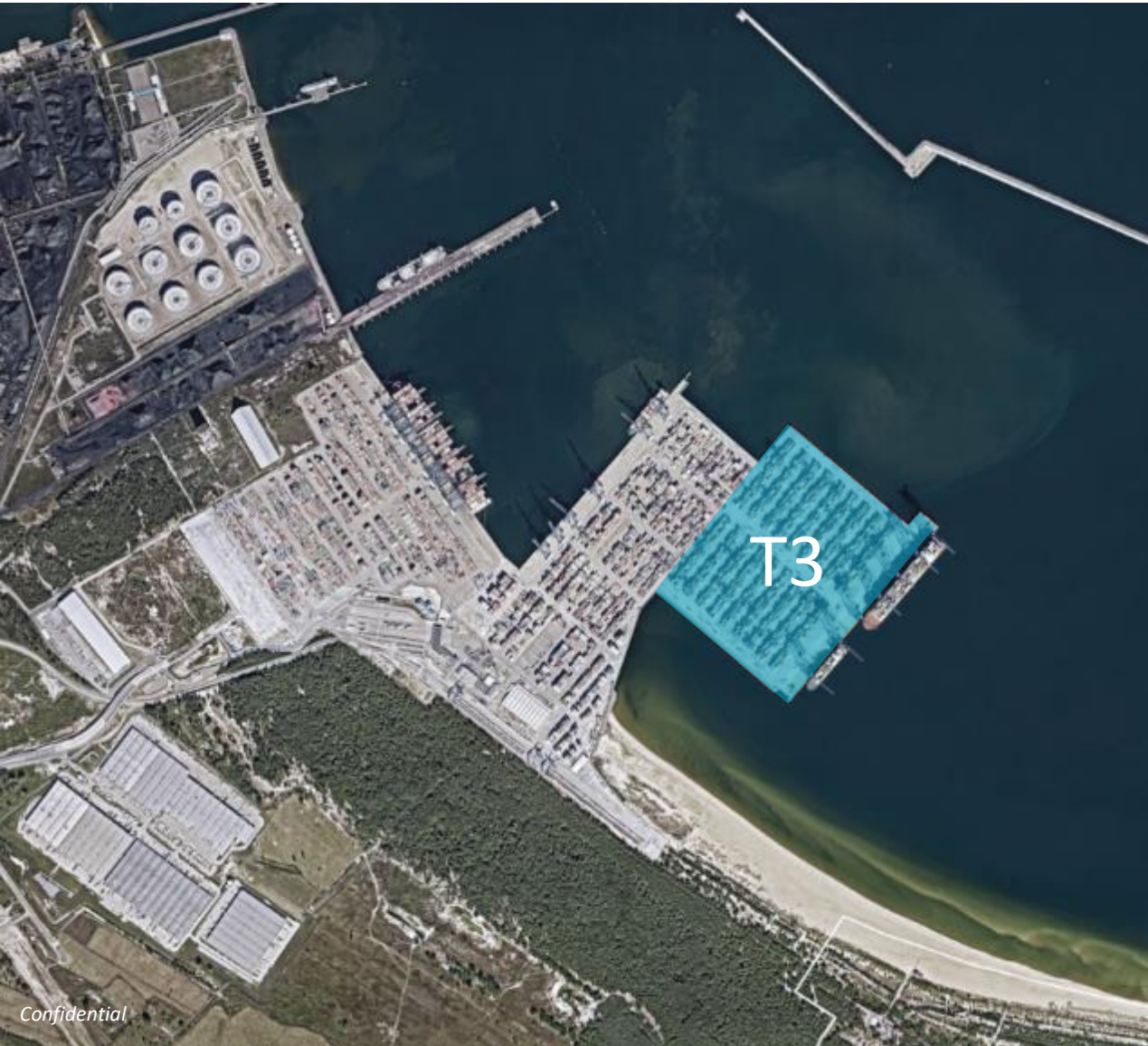
Tanks



Air sleeve

Current Developments: T3 Project

New era in European container shipping



INVESTMENT:

- **OCT 2022** start of the construction
- **450 million** euro investment

T3 SPECIFICATION::

- **36 hectares** additional operating space
- **717m** long quay
- **17m** deep
- **7 STS** cranes with 25+ rows outreach
- **1.5m TEU** capacity of semi-automated yard (in the first phase)
- **0.2m TEU** capacity of semi-automated yard (in the T3b phase)

T3 construction site

March 2025



LINK: [Movie](#)

T3 – first vessel

CMA CGM Tivoli 24.02.2025



LINK: [Movie](#)

Thank you!

Jacek Grabowski
Commercial Director

