
BYD 8Y PANYNJ Red Hook Container Terminal Demo

23 June 2017



This document does not contain confidential information

Within this document, you will find data charts for the BYD 8Y truck at the Red Hook Container Terminal located in New York, including eight days of use. A summary table is included below:

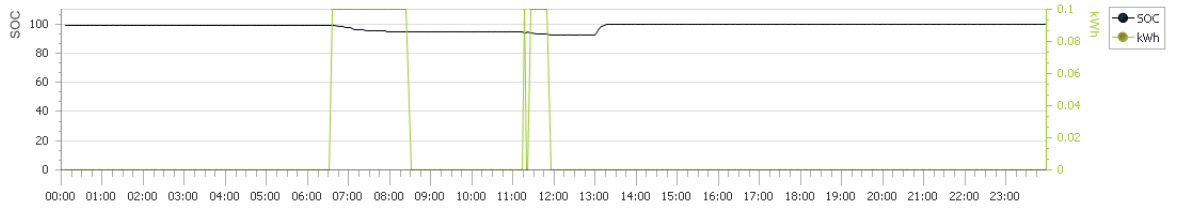
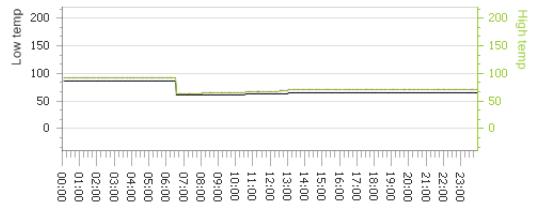
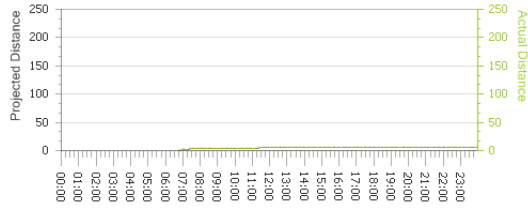
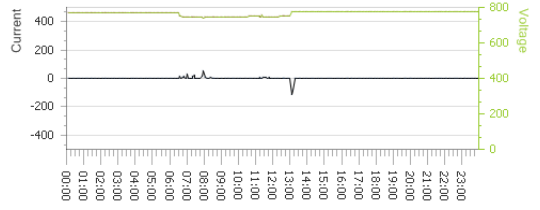
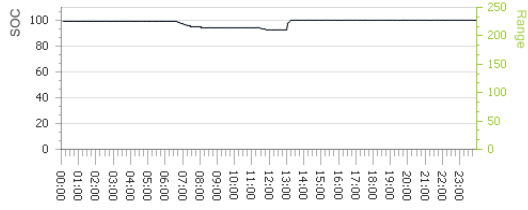
State of Charge

Overview

	5/23/17	5/24/17	5/26/17	6/7/17	6/13/17	6/14/17	6/15/17	06/21/17	Sum	Daily Average
SOC Used (%)	7.30	9.7	5.4	10.70	19.9	21.20	9.80	18.70	102.70	12.84
Hours Utilized (hr)	3.75	10.53	4.12	10.18	7.32	8.83	6.93	13.75	65.41	8.18
SOC/Hour (%/hr)	1.95	0.92	1.31	1.05	2.72	2.4	1.41	1.36	1.57	1.64
Predictive Run Time (hrs)	51.37	108.59	76.23	95.17	36.77	41.67	70.75	73.53	63.69	69.26
Total Charge Time (hrs)	0.27	-	-	-	1.12	-	0.88	-	2.27	0.76
SOC Charged (%)	7.3	-	-	-	30.10	-	31	-	68.40	22.80
kWh Charged (kWh)	15.26	-	-	-	62.91	-	64.79	-	142.96	47.65

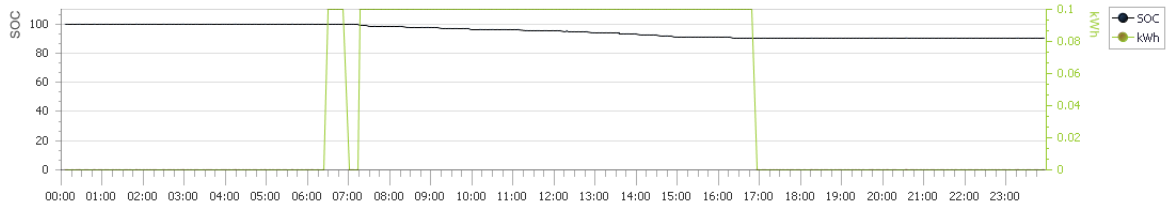
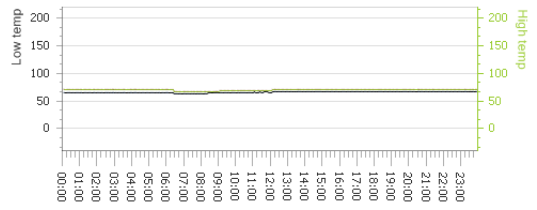
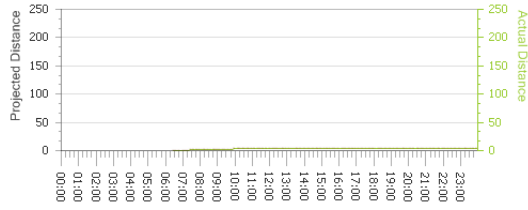
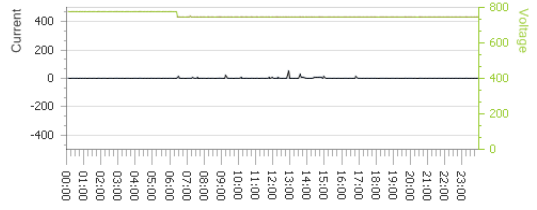
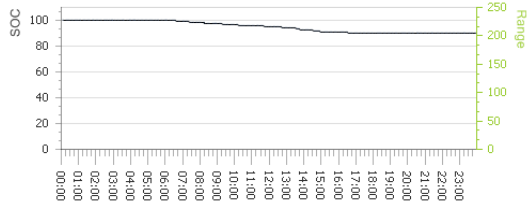
Q1M / BYD Truck testing

5/23/2017



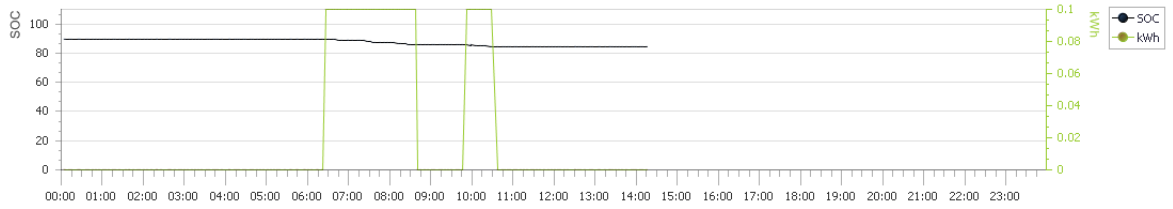
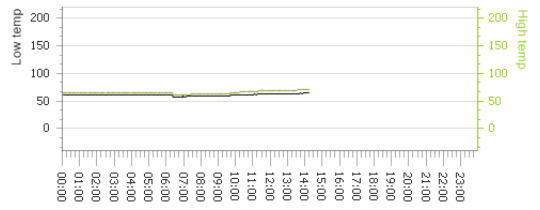
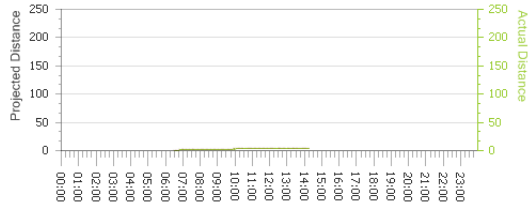
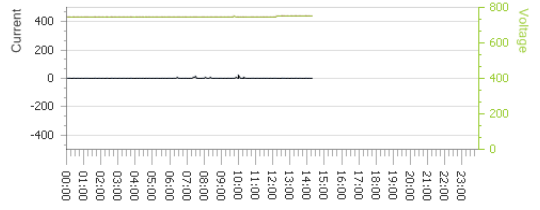
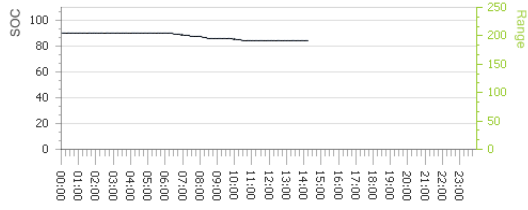
Q1M / BYD Truck testing

5/24/2017



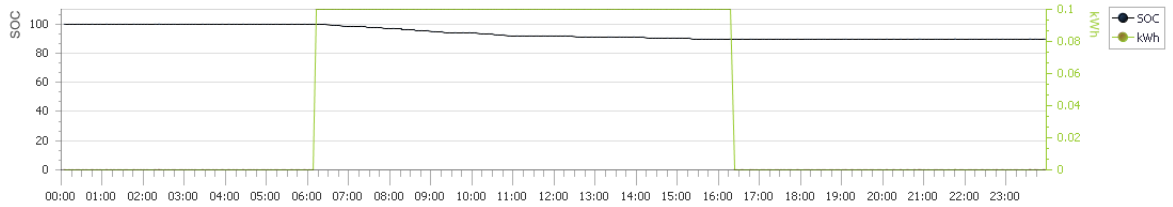
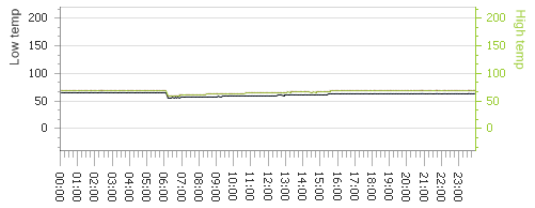
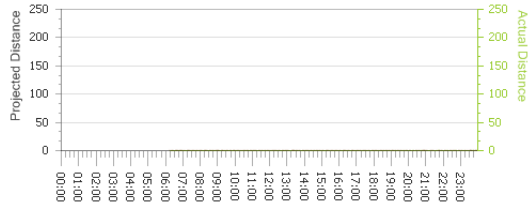
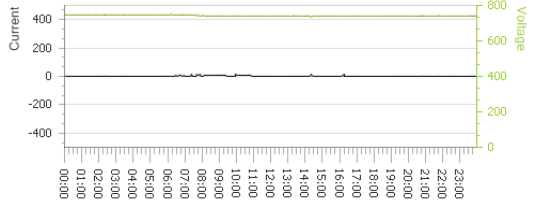
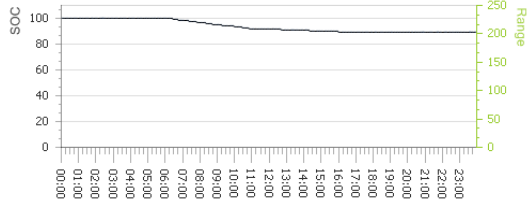
Q1M / BYD Truck testing

5/26/2017



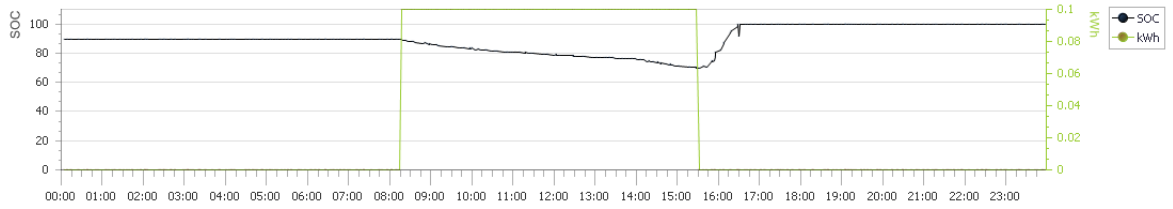
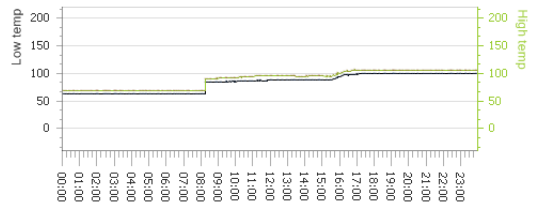
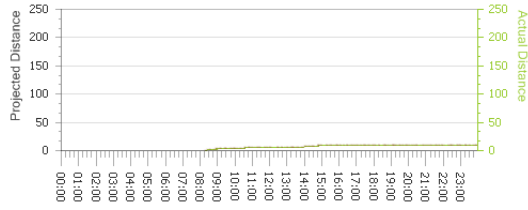
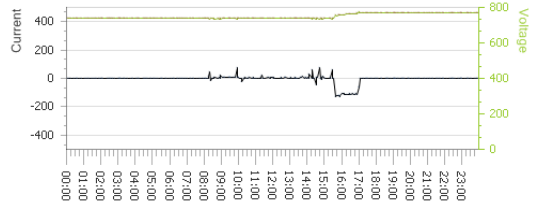
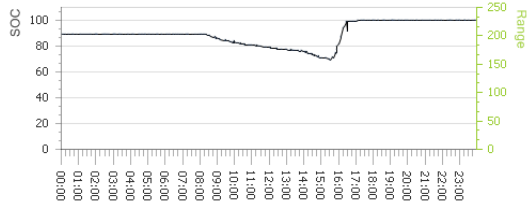
Q1M / BYD Truck testing

6/7/2017



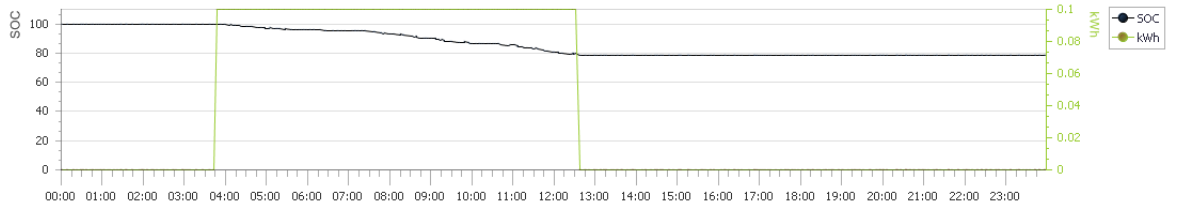
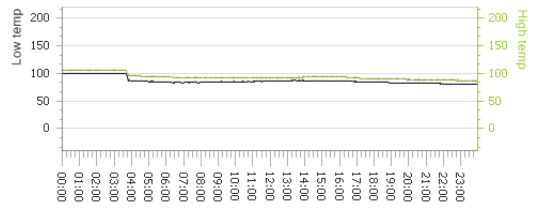
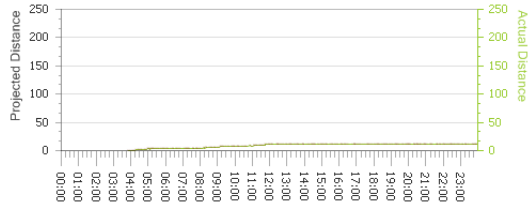
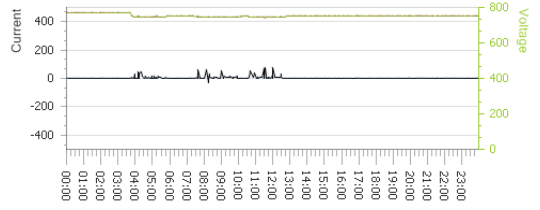
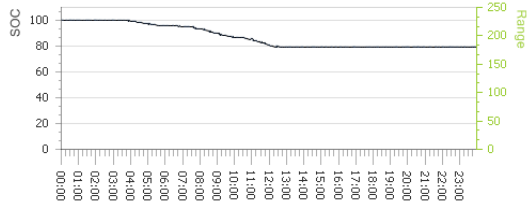
Q1M / BYD Truck testing

6/13/2017



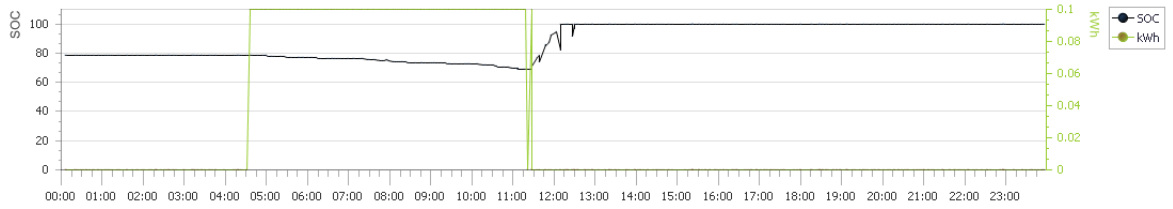
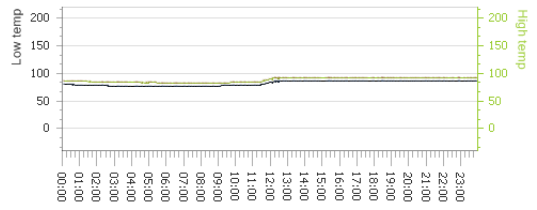
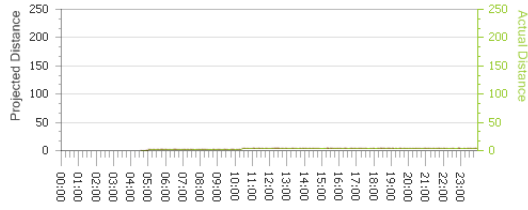
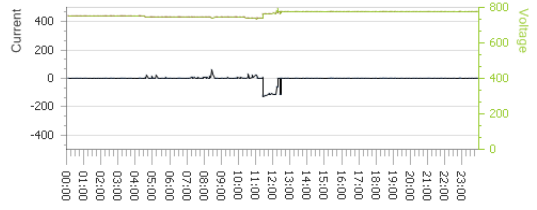
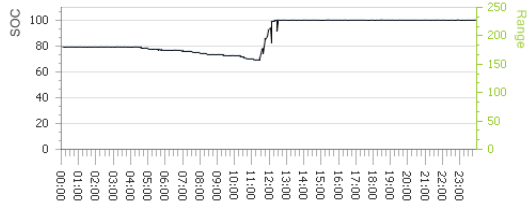
Q1M / BYD Truck testing

6/14/2017



Q1M / BYD Truck testing

6/15/2017



Q1M / BYD Truck testing

6/21/2017

