

REPUBLIQUE DU CAMEROUN
Paix - Travail - Patrie

PORT AUTONOME DE KRIBI



REPUBLIC OF CAMEROON
Peace - Work - Fatherland

PORT AUTHORITY OF KRIBI



**Socio-economic support
program in the locality of Kribi
(PASEK)**



Plan

- I. Context and program description**
- II. Program objectives**
- III. Program key components**
- IV. Program key dates**
- V. Some executed actions of the program**
- VI. Project contribution to SDGs**



I. Context and project description

In order to further strengthen the relationship between the town and the port of Kribi, and to ease its acceptance by the indigenous population, the Kribi socio-economic support program (PASEK) was developed.

This support program specifically aims to create a real dynamic alliance or network of actors around common objectives, actions, and projects meeting the needs of the indigenous population of the town where the port is found.

This program requires key actors of the port community to ally themselves to face problems of sustainable development of the locality. It could be seen as a co-construction exercise that consists in providing solutions that go beyond the provision of resources and also offers a framework for consultation and permanent reflection in order to find solutions adapted to identified needs.



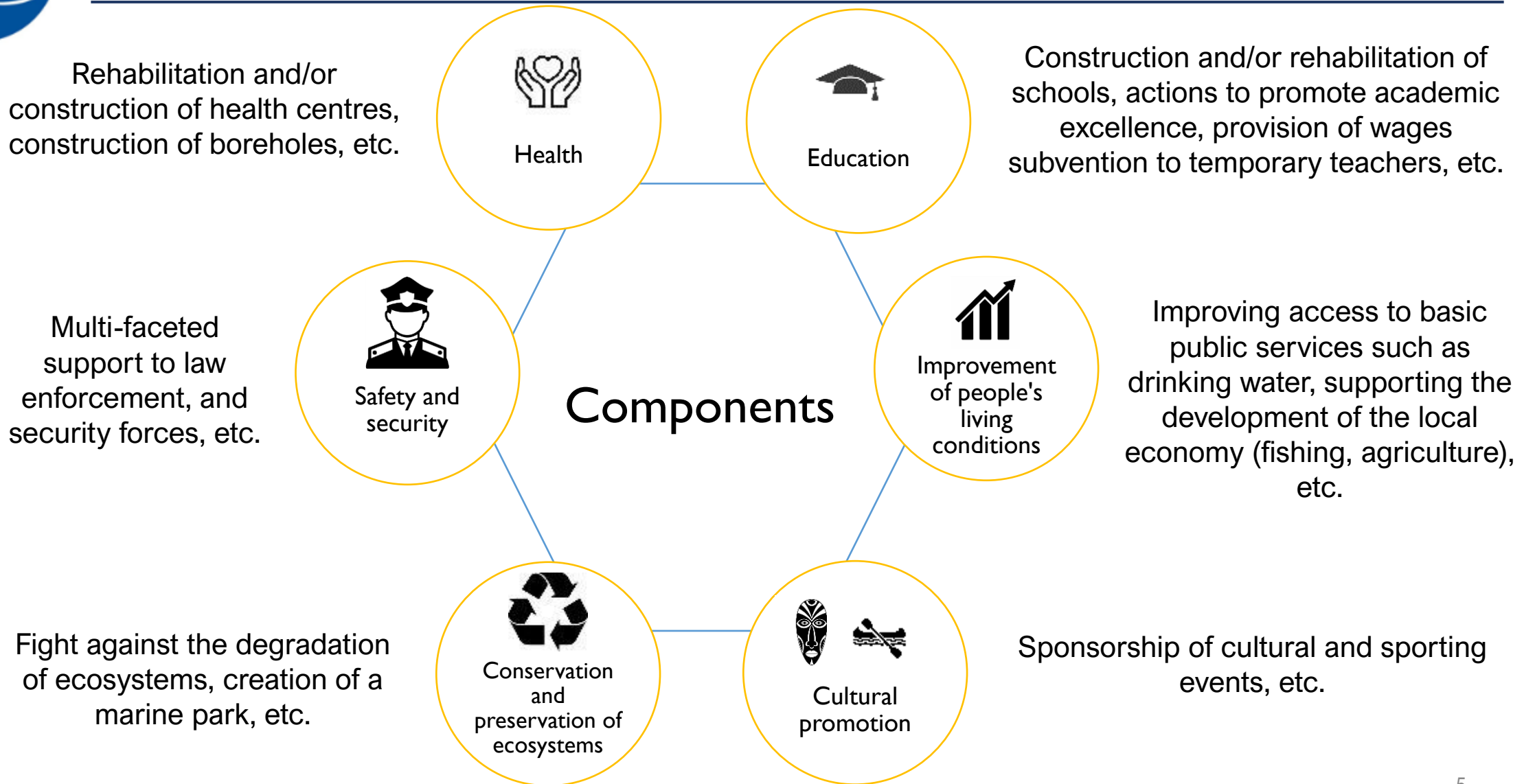
II. Program Objectives

Below are the key objectives of the support program developed:

- Provide concerted and far-reaching solutions to the economic, social, and societal challenges facing the Port Authority of Kribi (PAK) territory;
- Improve the quality and quantity of socio-collective facilities (classrooms, health centres, etc.);
- Organize various professional training on site, according to the needs of local residents;
- Offer initial training for the benefit of local populations to meet the need for a dynamic professional environment on site or off-site;
- Develop a capacity to study, eliminate, supervise, or mitigate the negative externalities of economic activities;
- Improve the competitiveness of companies by allowing better integration into their environment.

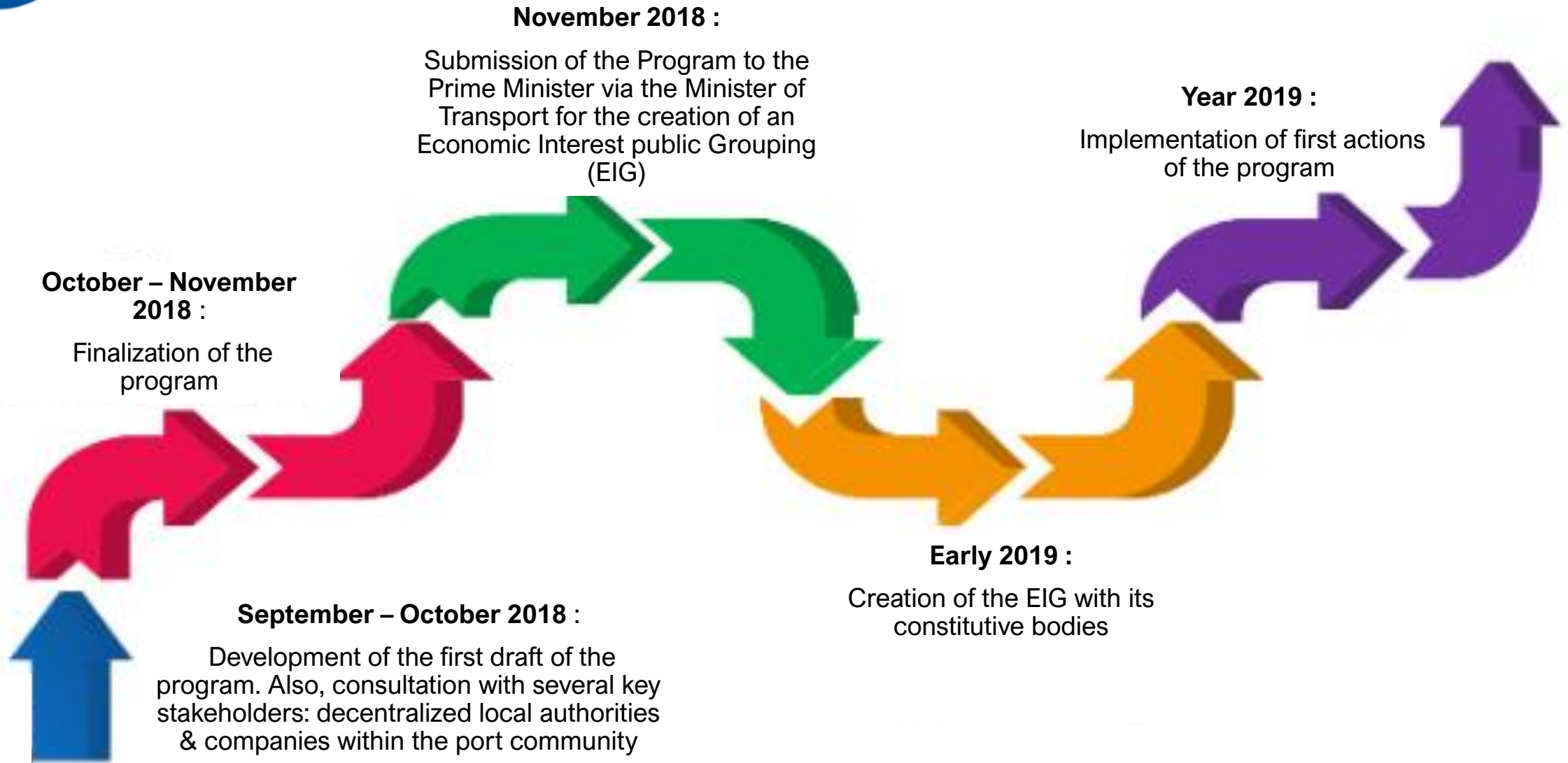


III. Program key components





IV. Program key dates





V. Some executed actions of the program - Sponsoring events and cleaning of beaches



The Port Authority of Kribi sponsors sporting events



Beach cleaning by the Port Authority of Kribi



V. Some executed actions of the program - School donations



The Port Authority of Kribi promotes education, through a donation of 500 tables-benches to a school in Kribi



School donations together with one actor of the port community (CIMPOR)



V. Some executed actions of the program – classrooms building



Terrain of the Londji kindergarten school where classrooms are to be built



Two classrooms built already on the chosen site shown beside



V. Some executed actions of the program – borehole construction



Construction of the borehole in the Newton Saint Thérèse parish



V. Some executed actions of the program – aquaculture units establishment



Establishment of aquaculture units in some villages in Kribi



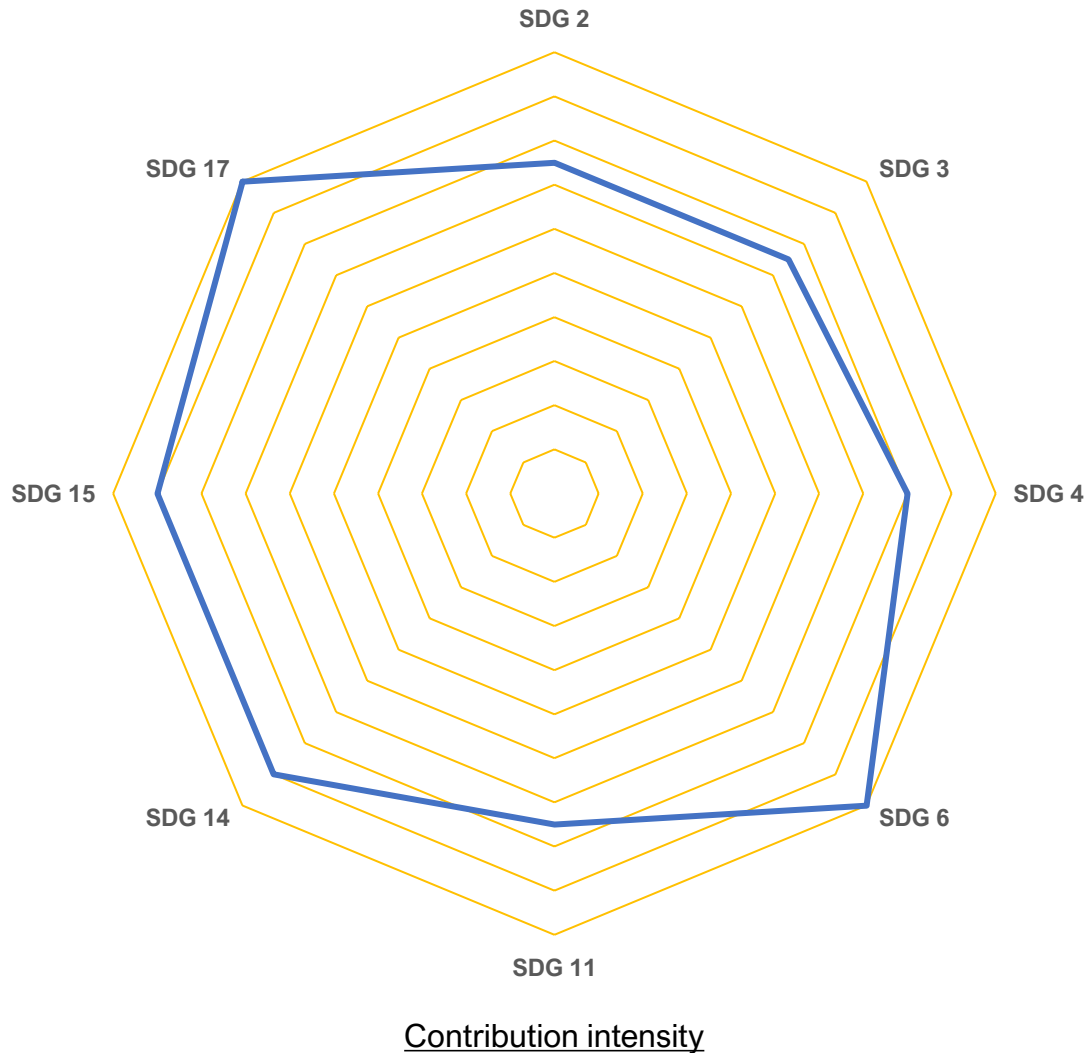
V. Some executed actions of the program – reforestation



Reforestation of the coastal strip in the locality of Eboundja



VI. Program contribution to SDGs



- The activities described under the program components meet SDGs at varying degree as shown on the figure beside.
- Specifically, school donations and teacher subventions provided would contribute to hunger reduction (SDG 2 and SDG 4). The improvement of access to potable water by constructing wells (SDG 6) and protecting sea turtles ecosystem (SDG 14) would improve access to water and marine ecosystem respectively.
- Also, the protection/promotion of local culture (SDG 11) and the health components of the program make life on earth more inclusive and improves the health of the citizens respectively (SDG 3).
- Furthermore, the program also does reforestation (SDG 15) and brings together actors of the port community to carryout common actions (SDG 17).



PORT AUTHORITY OF KRIBI

PO Box 203 Kribi - Cameroon

Email: contact@pak.cm

Web site: www.pak.cm

Tel: +237 222 46 21 04