

Your Port Opens Up Again

Barcelona, May 2023



Port de Barcelona

Your Port Opens Up Again

A successful example of social integration of ports

Unique example of **collaboration among the city, the port and private stakeholders** to **enhance maritime passenger links and connectivity** within the city and between the port and the city

Last stage of the process that started 30 years ago with the 1992 Olympic Games to remove all **commercial and passenger activities from the Old Port**, fully opening it to the city and creating new areas for citizen's enjoyment

Completes the full **integration of the Old Port area and the city**





Port de Barcelona

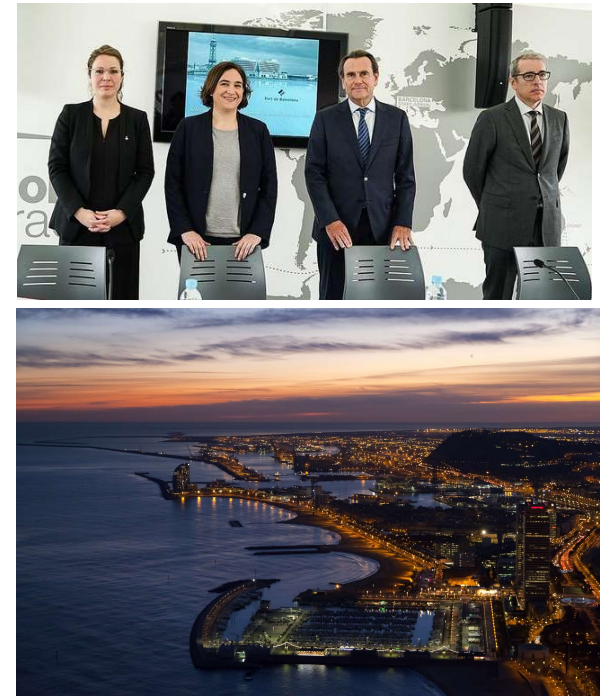
Your Port Opens Up Again Collaboration among partners

Leading role of the Port Authority

Dialogue among **private companies and public institutions** to agree on timing, conditions and actions has been **long and challenging**

The uniqueness of this agreement is its **complexity** and that it **involves all passenger traffic stakeholders**, including public entities and private companies

It is clear example of **successful collaboration** between port, city and stakeholders **to improve the social integration of ports**





Port de Barcelona

Your Port Opens Up Again Projects



- 1 Closure of all passenger terminals located at the Old Port
- 2 Enlargement of Adossat wharf
- 3 Relocation of a multipurpose terminal
- 4 Construction of 2 cruise terminals and 1 ferry terminal
- 5 Deployment of OPS
- 6 Launch of a nautical shuttle service and an autonomous shuttle bus
- 7 Reorganisation and improvement of mobility Passenger services (taxi, bus, etc)
- 8 New green and walking areas in the Old Port
- 9 Development of a hub for Blue economy innovation and a Logistics training center



Port de Barcelona



Your Port Opens Up Again Projects and Added Value (1/2)

Environmental, **Social** and **Economic** sustainability aspects have been key drivers of this project

Agreement between City Council, Port Authority and passenger traffic stakeholders

- Successful collaboration among public-private entities

Closure of all passenger terminals located at the Old Port (3 cruise terminals and 1 ferry terminal)

- Remove passenger ship emissions from downtown
- Reduction of severe congestion in the old port

Enlargement of Adossat wharf

- Concentration of passenger traffic in a single wharf

Construction of 2 cruise terminals and 1 ferry terminal

- Enhancing passenger facilities
- ■ Better connectivity for citizens and visitors. Additional international flight connections
- New qualified jobs

Relocation of a multipurpose terminal

- Improving efficiency in port operations





Your Port Opens Up Again Projects and Added Value (2/2)

Environmental, **Social** and **Economic** sustainability aspects have been key drivers of this project

Deployment of OPS

- Reduction of emissions

Launch of a nautical shuttle service and an autonomous shuttle bus.

- Increase the use of electric and autonomous vehicles
- New transport services improving city-port connectivity

Reorganisation and improvement of mobility Passenger services (taxi, bus,etc)

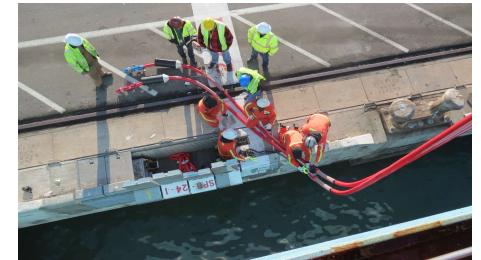
- Efficient mobility services for visitors
- Improving city-port connectivity

New green and walking areas in the Old Port

- Development of new green areas
- Opening a port area to citizen's enjoyment

Development of a hub for Blue economy innovation and a Logistics training center

- New logistics training institutions
- Diversification of labour opportunities for local community
- ■ New jobs for qualified professionals





Your Port Opens Up Again

Why it is a key project for the port and the city

Your Port Opens Up Again is an innovative project that

- ➔ Increases the **contribution of the port to the city's social integration**
- ➔ It helps **improving the connectivity** within the port, between the port and the city and between the port and other Mediterranean ports both for ferries and cruise ships
- ➔ It is a **unique example of collaboration** between administrations and between them and private companies.

Your Port Opens Up Again

Barcelona, May 2023