

HABITAT MITIGATION CREDITS

DUWAMISH RIVER PEOPLE'S PARK AND SHORELINE HABITAT

Fall 2021

PROJECT DESCRIPTION

The Port of Seattle is establishing a Multi-Site Wetland Mitigation and Habitat Conservation Bank within the Green Duwamish Watershed. This watershed has been heavily developed over time, degrading estuarine, riparian, and freshwater wetland environments. The bank will rehabilitate ecological functions and restore priority habitat, while facilitating sustainable growth and development throughout the region. The service area for the mitigation bank includes key sub-watersheds that are critical for local salmon recovery plans – the Lower Green River, the Duwamish Estuary, and marine nearshore areas.

Duwamish River People's Park and Shoreline Habitat (formerly known as Terminal 117) is the first habitat project built as part of the mitigation bank that will allow third parties to invest in Port habitat projects via purchase of mitigation credits. The project is restoring 14 acres of habitat, includes forested buffer, emergent marsh, mudflat, shallow subtidal, and deep subtidal areas along nearly half a mile of Duwamish River shoreline. The restoration creates valuable off-channel habitat in the marine-freshwater transition zone, enhancing a high-priority migratory corridor for Chinook salmon. In this

habitat, out-migrating juveniles can seek refuge while acclimating to saltwater environments before navigating into Puget Sound.

Over the next ten years, the project will generate more than 500 credits (called "Discounted Service Acre Years," or DSAYs) which can be used to resolve Natural Resource Damages (NRD) liability. Over 200 competitively priced NRD credits will be available for sale mid-2022. In the near future, the project will also be able to provide conservation credits which can be used to satisfy Endangered Species Act requirements. Revenue generated by the Port through mitigation credit sales will be reinvested in habitat restoration projects in the Green-Duwamish Watershed and Elliot Bay.



Riverbank excavation

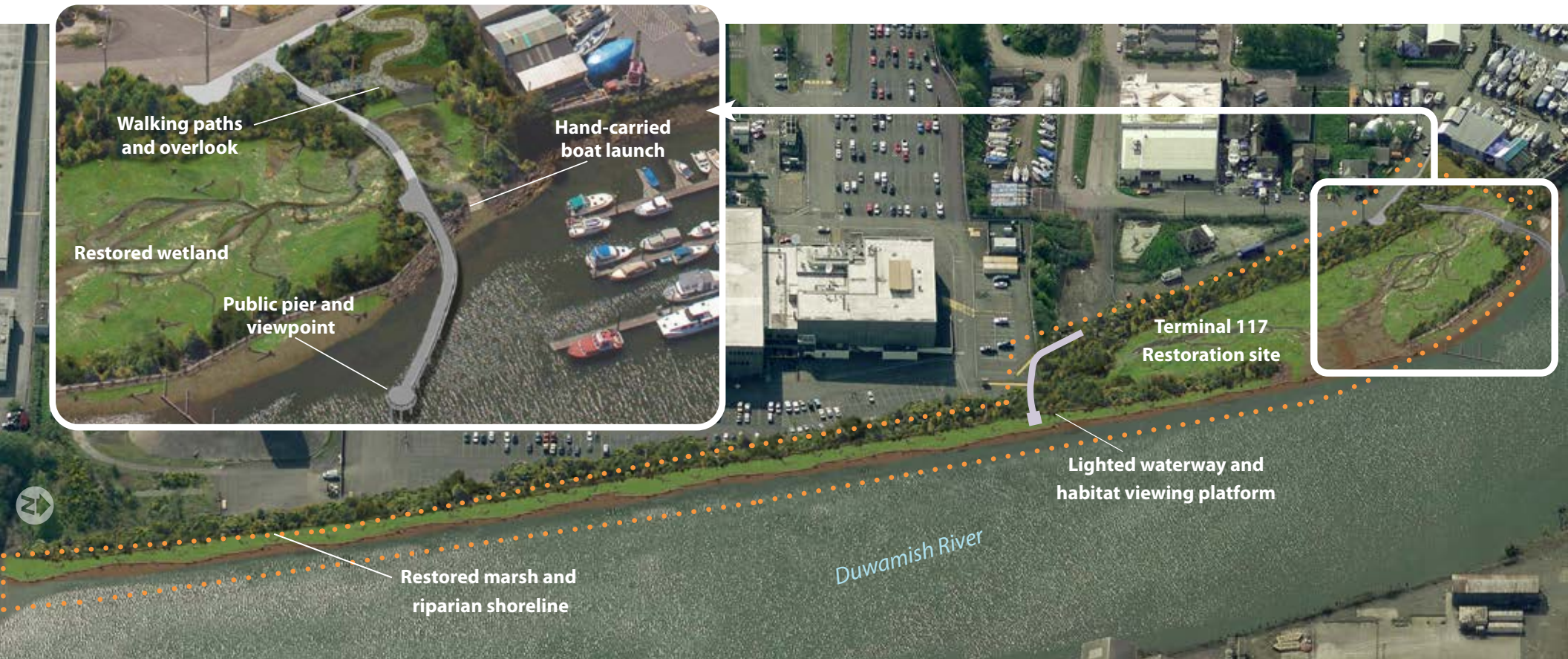
MITIGATION CREDIT RELEASE SCHEDULE

NRD credits will be released over a ten-year period based on satisfaction of key project milestones

Year	Milestone	Percentage of total credits released
Mid-2022	Construction complete; "Time-zero" monitoring	50%
2023	Year 1 performance monitoring	10%
2025	Year 3 performance monitoring	10%
2027	Year 5 performance monitoring	10%
2029	Year 7 performance monitoring	10%
2031	Final performance monitoring	10%



Fall 2021



KEY FEATURES

- 14 acres of restored emergent marsh, mudflat, and riparian habitat
- 2,050 linear feet of shallow and deep subtidal shoreline habitat
- Largest habitat restoration project in Duwamish River Estuary
- NRD credits available mid-2022
- Revenue generated reinvested in habitat restoration projects
- Priority habitat for migrating Chinook salmon
- Supports environmental justice in Duwamish Valley neighborhood
- Promotes community and youth engagement in green jobs and trainings

CONTACT INFORMATION

Kathleen Hurley

Senior Environmental Program Manager
 Hurley.K@portseattle.org

Learn more about the Port's Mitigation Bank at: www.bit.ly/HabitatBank

