

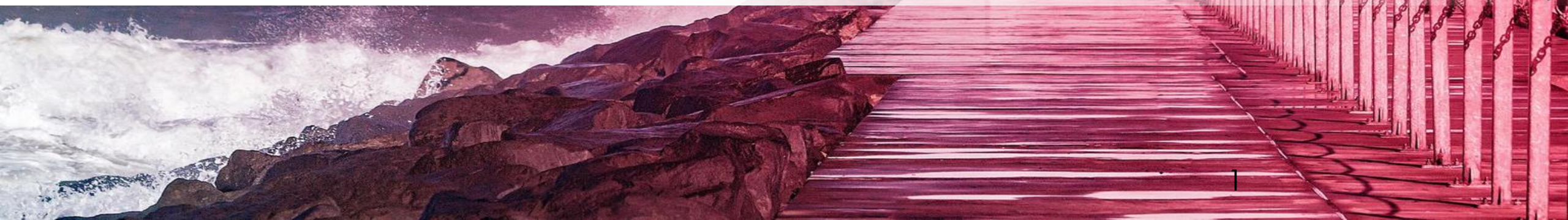
General Assembly

Nov 15th
2022

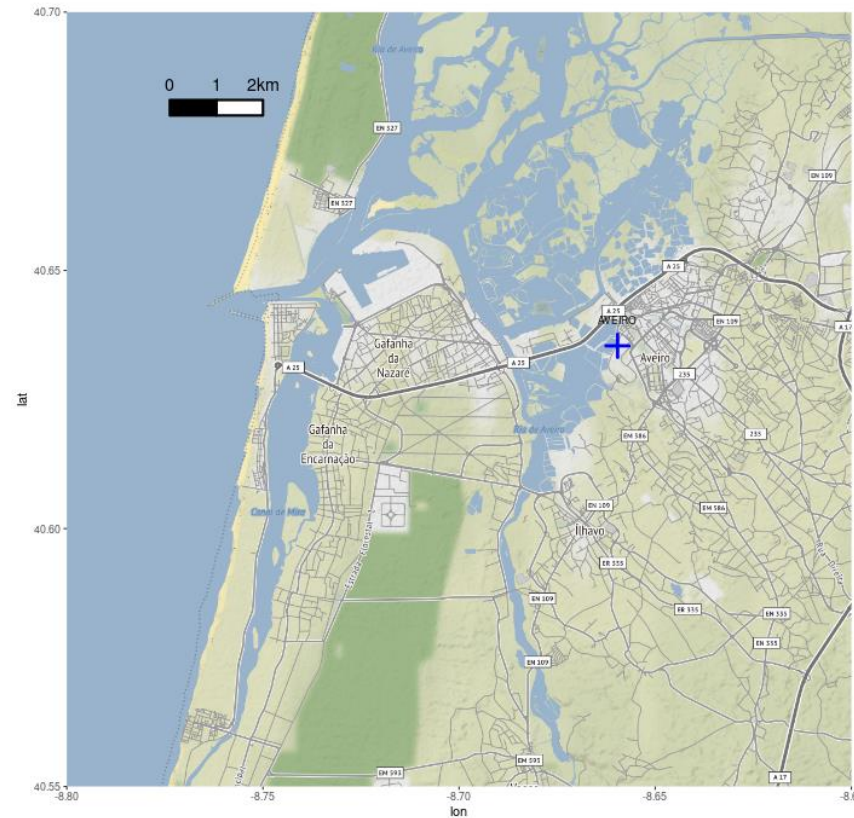
Telco



2nd General Assembly

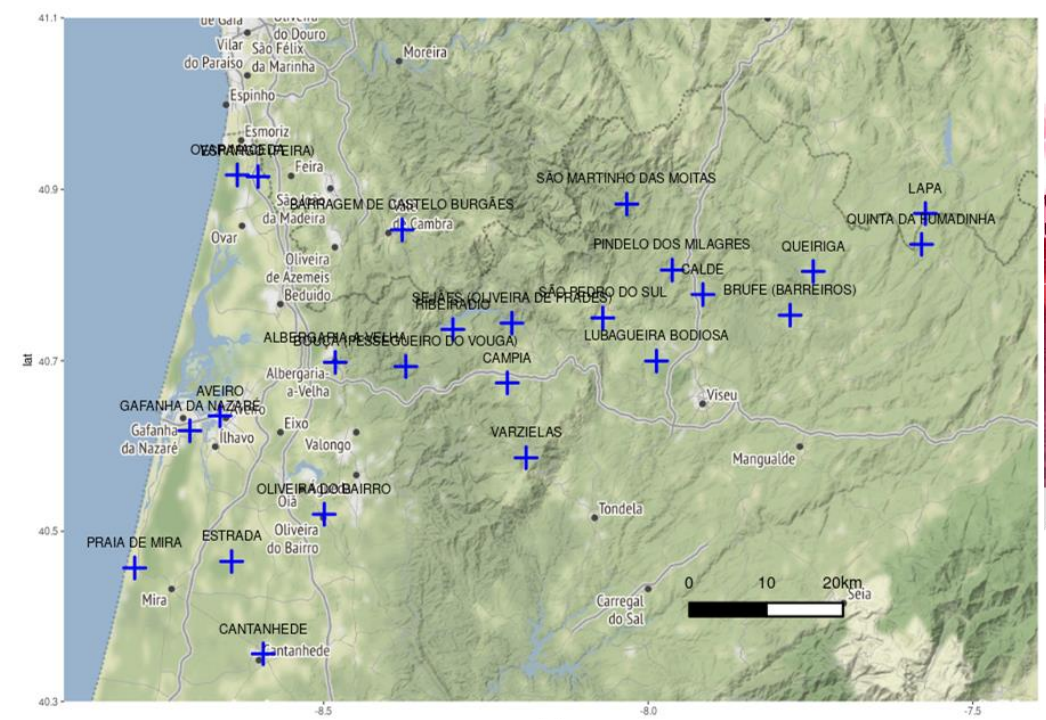


5. ECCLIPSE

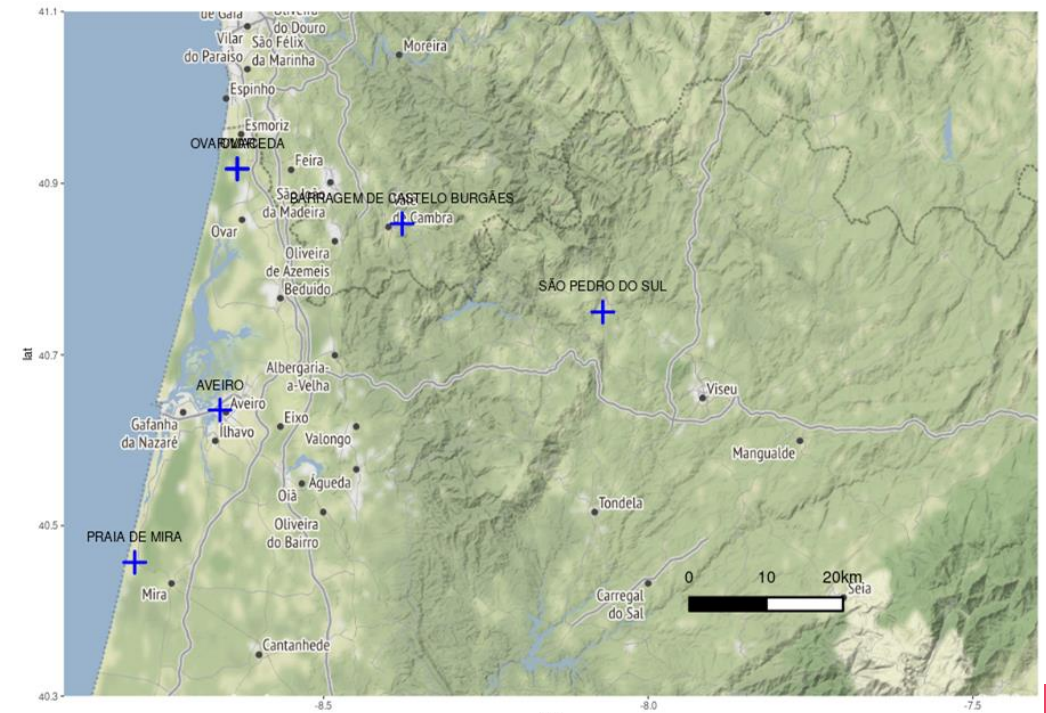


IPMAV weather station

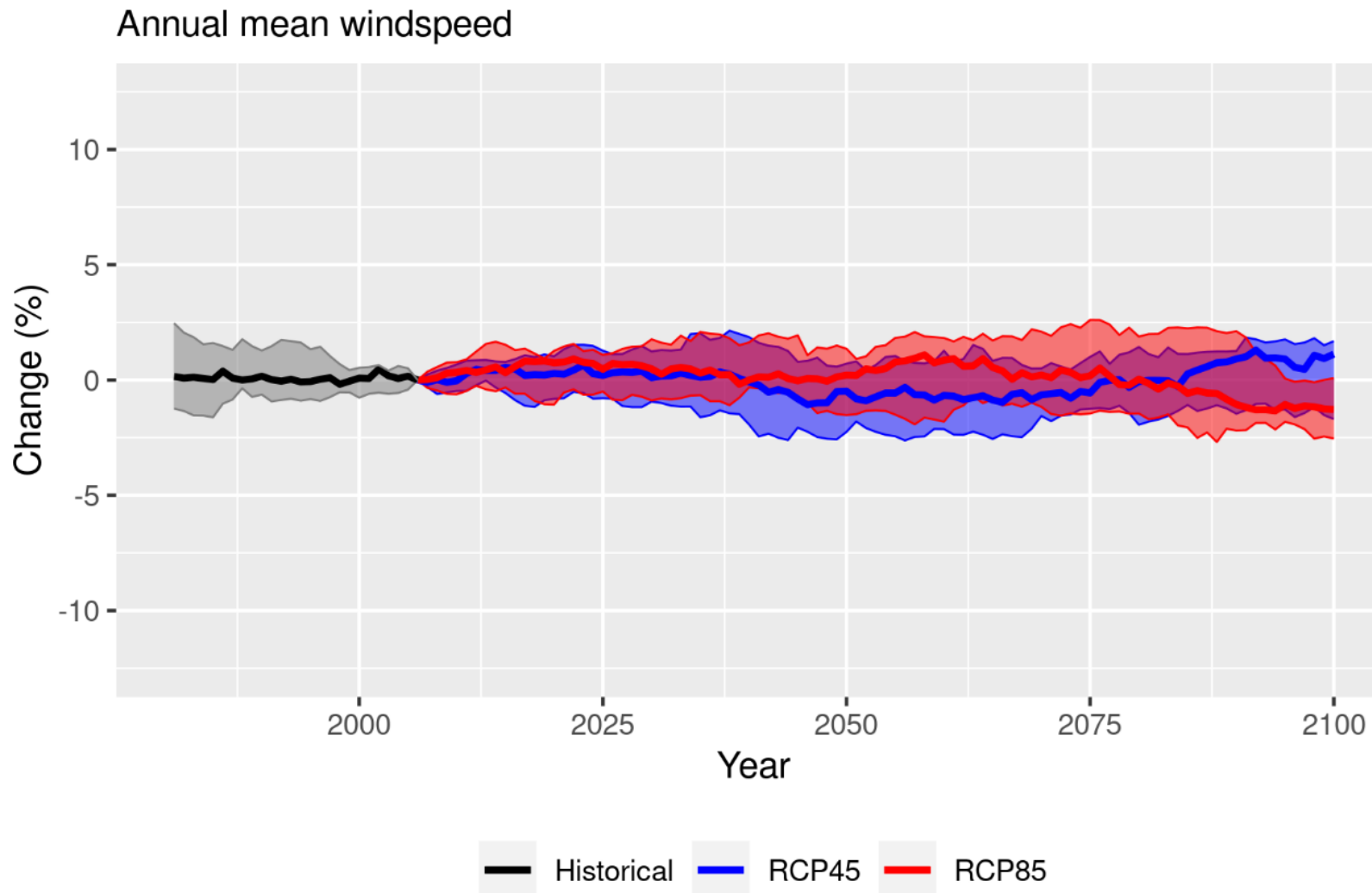
Precipitation



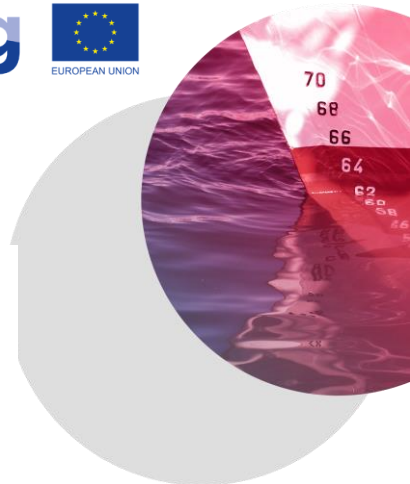
Temperature



5. ECCLIPSE - Mean wind



5. ECCLIPSE - Mean wind (extremes)

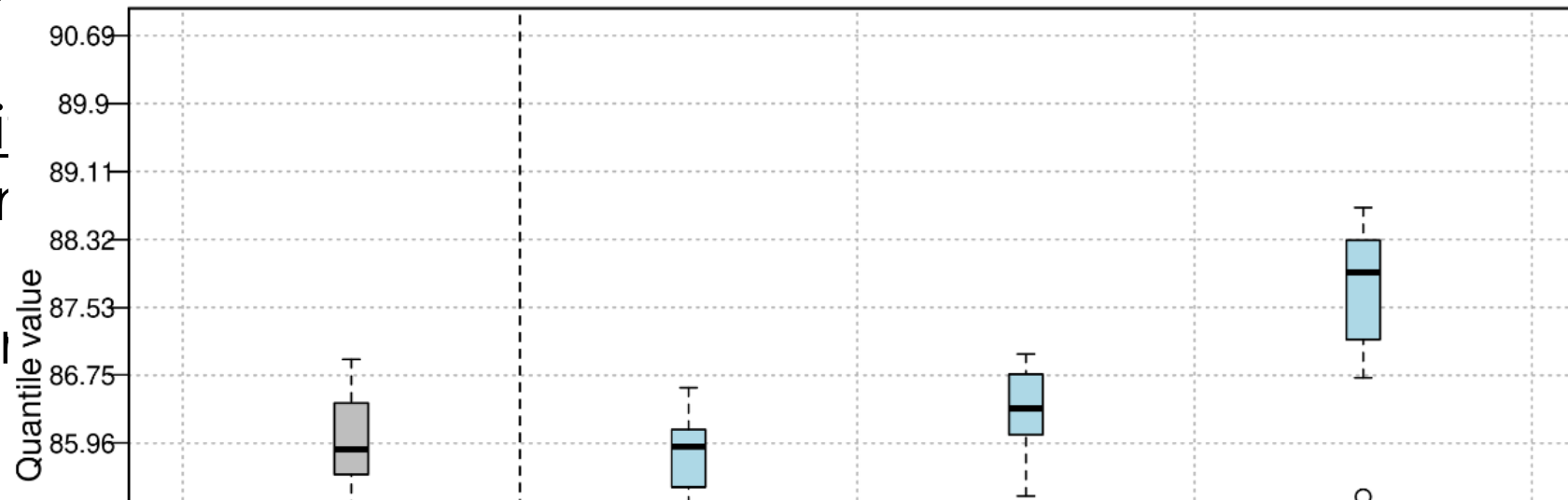


Two app

- Identi
- Returr

... no sigl

Quantile value 1045063B_SIMAR-AVEIRO 28.8km/h



Quantile values	SIMAR-AVEIRO station (idem for IPMAV)			
	Historical	2016-2040	2041-2070	2071-2100
Median value for 28.8 km/h	85.90	85.96	86.40	88.00
Median value for 54.5 km/h	99.82	99.78	99.82	99.86
Median value for 74.1 km/h	99.99	99.99	99.99	99.99

5. ECCLIPSE - Mean wind (extremes)



Two approaches:

- Identified thresholds: 37 and 55.5 km/h
- Return periods: 5, 20 y 100 years.

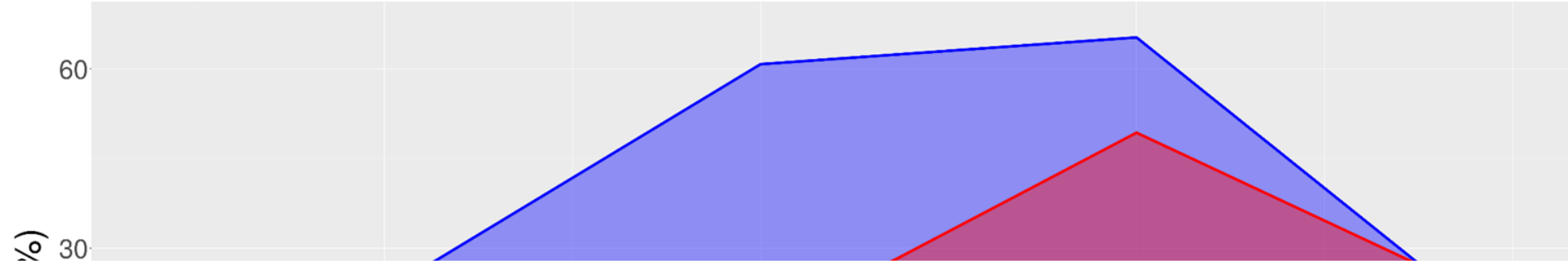
... no significant increases in risk in any case.

Quantile values	SIMAR-AVEIRO station (idem for IPMAV)			
	Historical	2016-2040	2041-2070	2071-2100
Median 5-y RP (km/h)	62	64	64	64
Median 20-y RP (km/h)	64	68	68	68
Median 100-y RP (km/h)	68	73	73	72

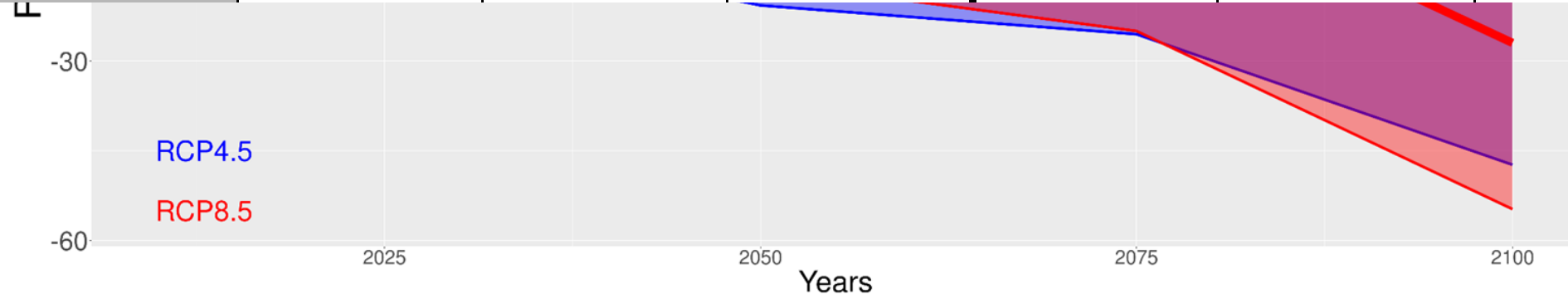
5. ECCLIPSE - Visibility (fog)



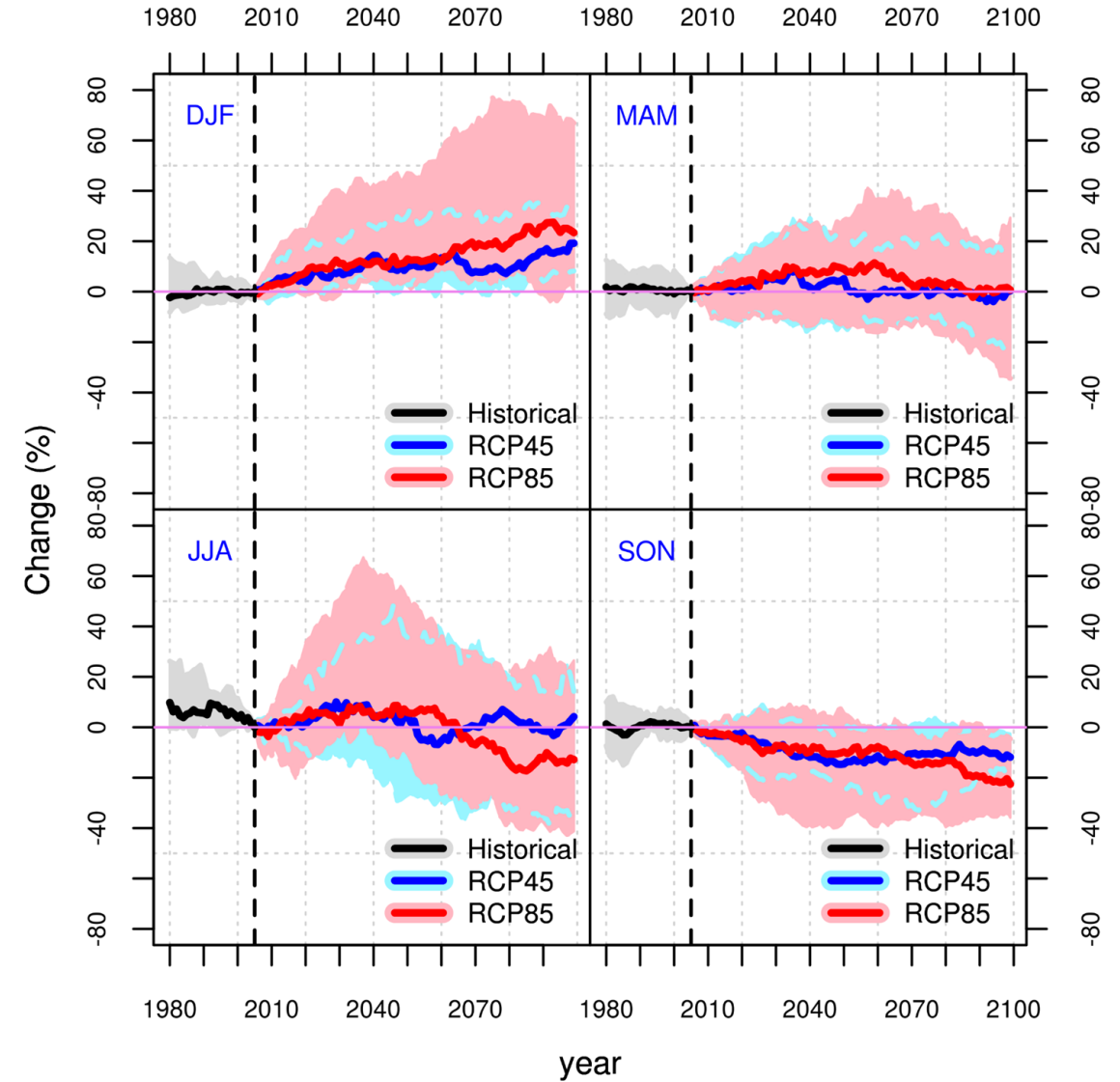
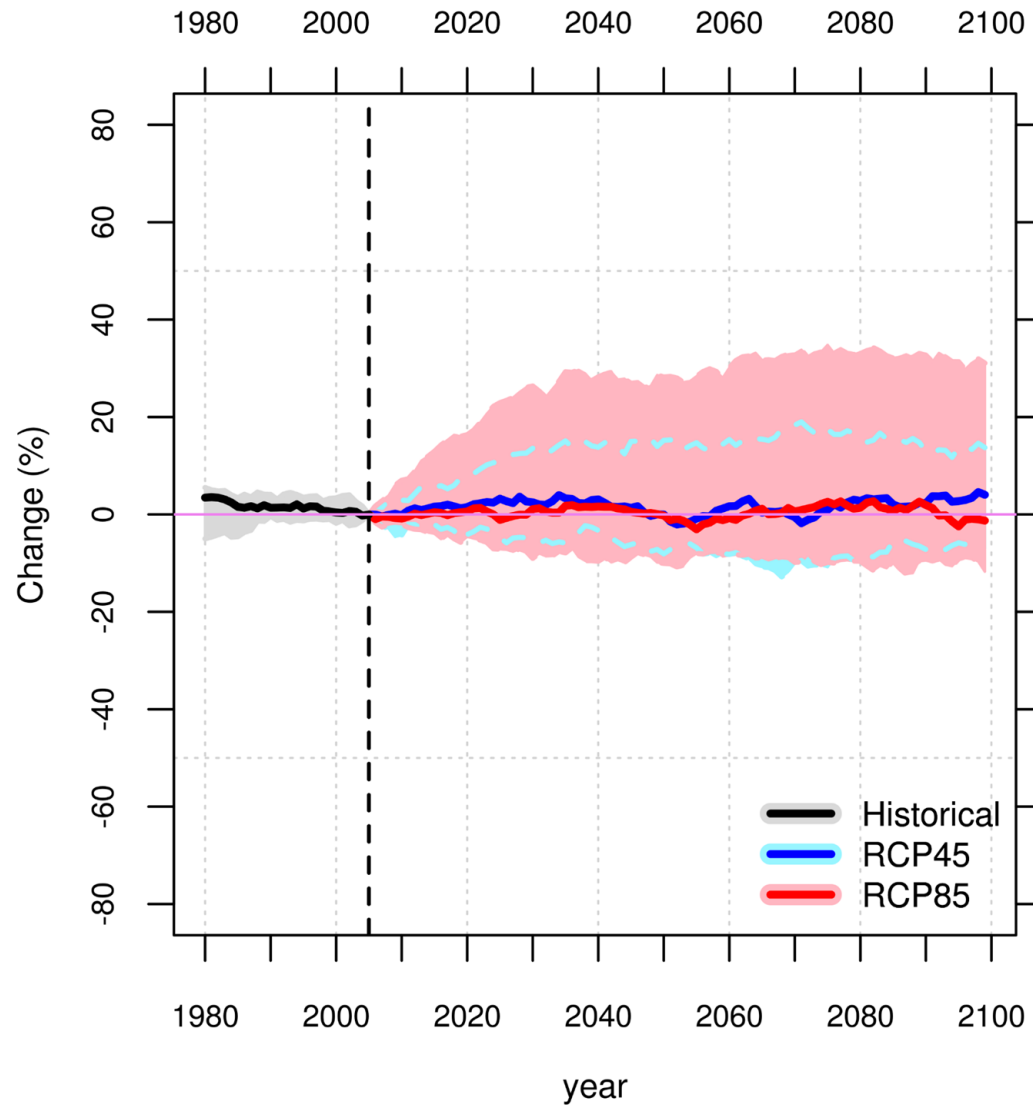
Relative increase of fog days in Aveiro



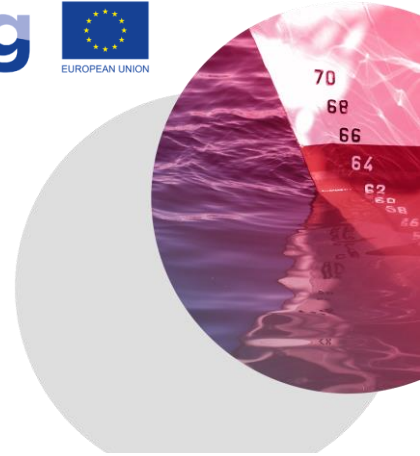
	RCP 4.5			RCP 8.5		
	2016-2040	2041-2070	2071-2100	2016-2040	2041-2070	2071-2100
Gironde Estuary	-8% (-20/+60)	-5% (-25/+65)	-8% (-45/+20)	+3% (-15/+10)	+3% (-25/+50)	-30% (-55/+20)



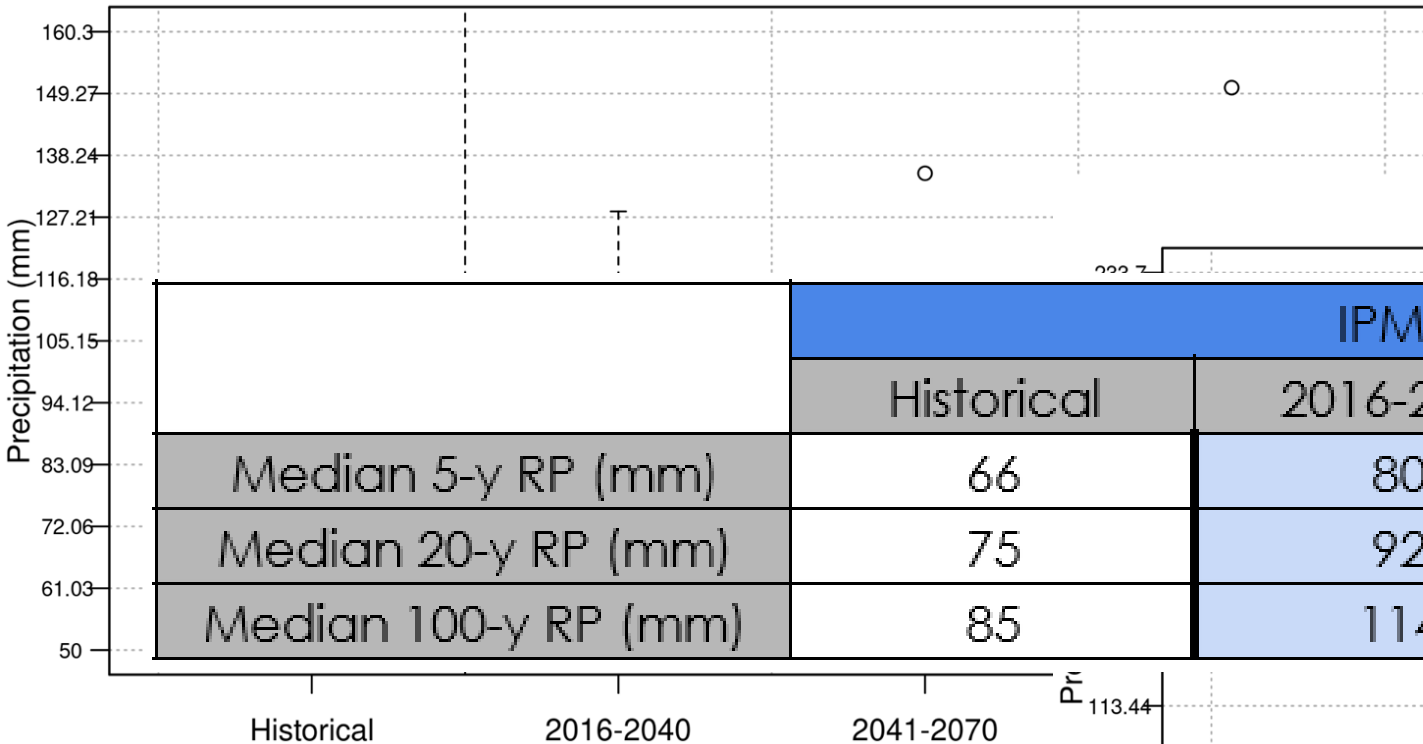
5. ECCLIPSE - Mean Rainfall



5. ECCLIPSE - Extreme rainfall

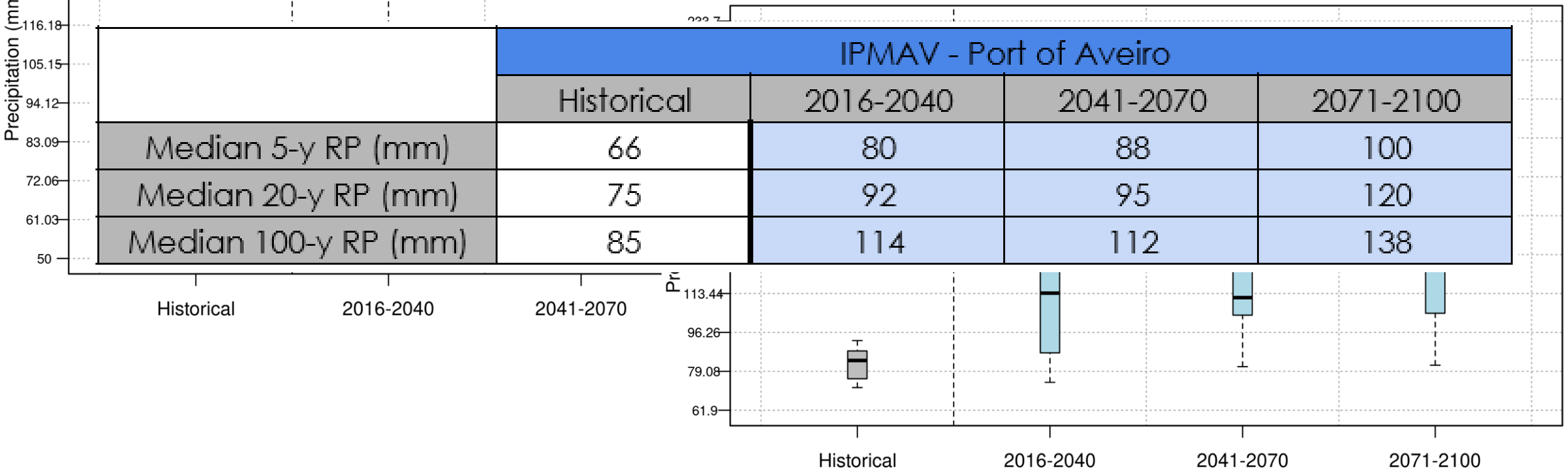


Precipitation IPMAV 5-years R.P.



Aveiro IPMAV

Precipitation IPMAV 100-years R.P.

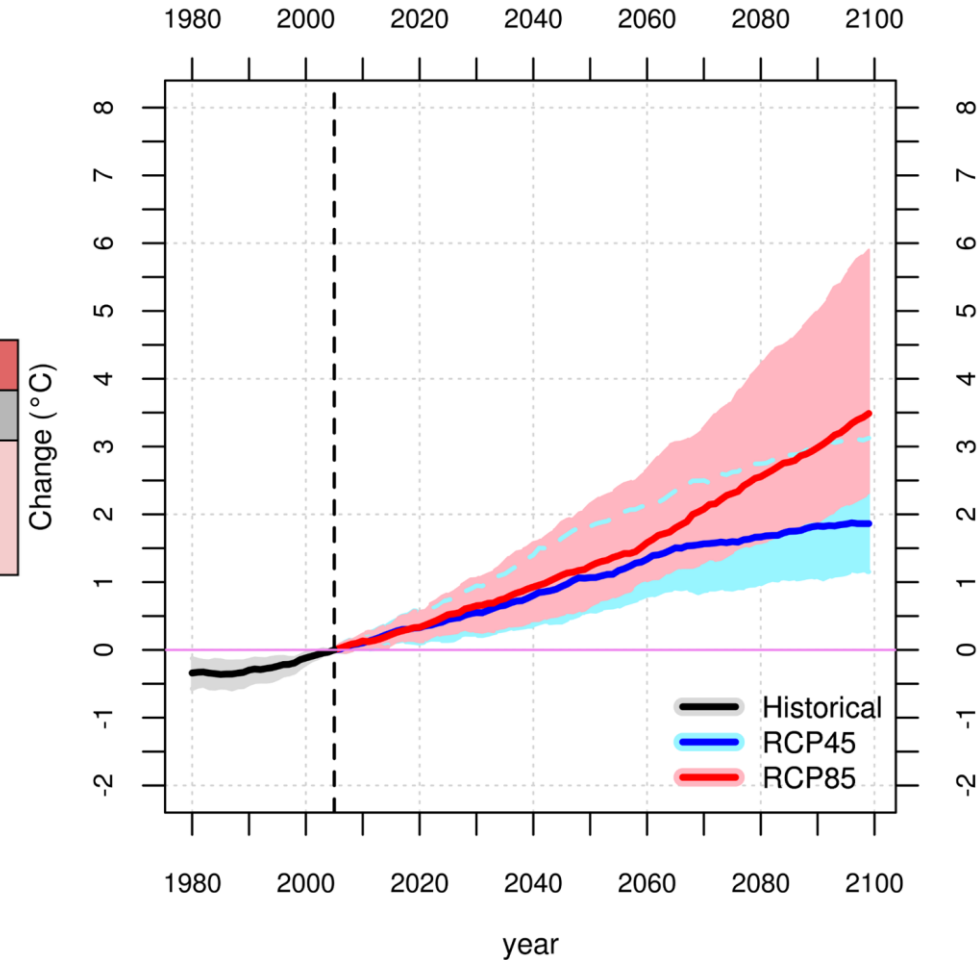


5. ECCLIPSE - Temperature



The warming is trends evident and strong for the future

	RCP 4.5			RCP 8.5		
	2016-2040	2041-2070	2071-2100	2016-2040	2041-2070	2071-2100
Port of Aveiro (°C)	+0.75 (+0.5/+1.25)	+1.75 (+1/+2.5)	+2 (+1/+3)	+1 (+0.75/+1.5)	+2 (+1.25/+4)	+3.5 (+2.5/+6)

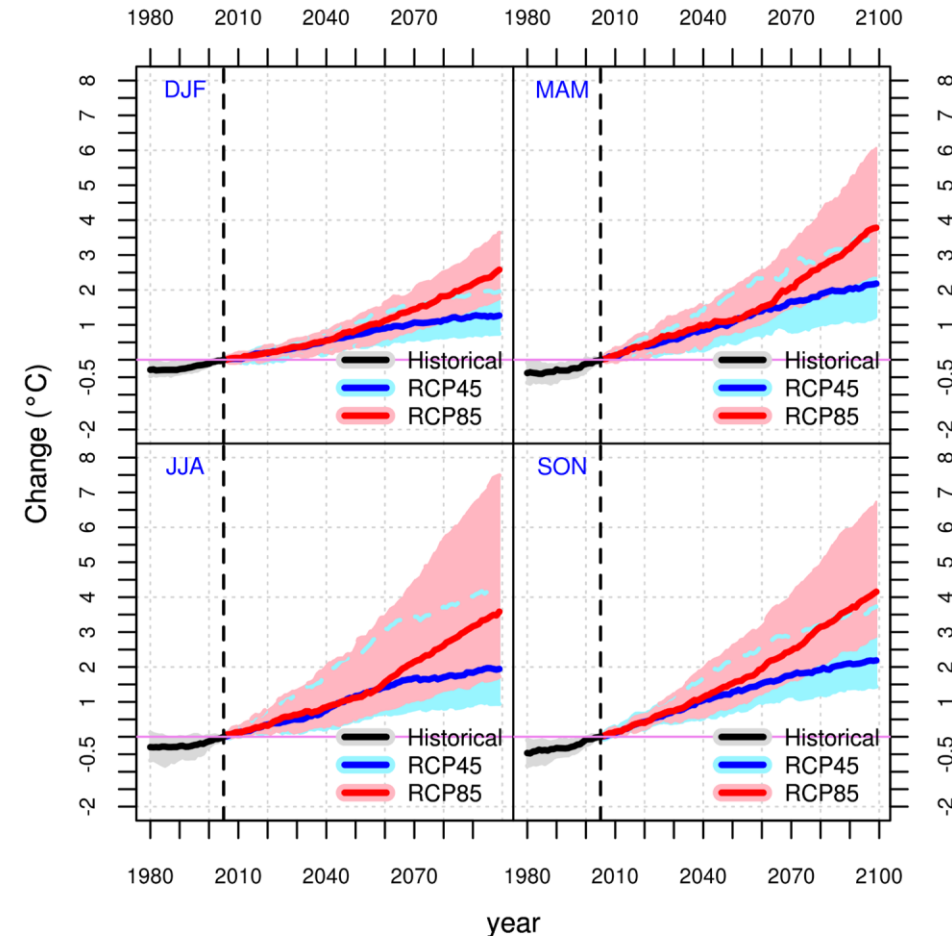


5. ECCLIPSE - Temperature

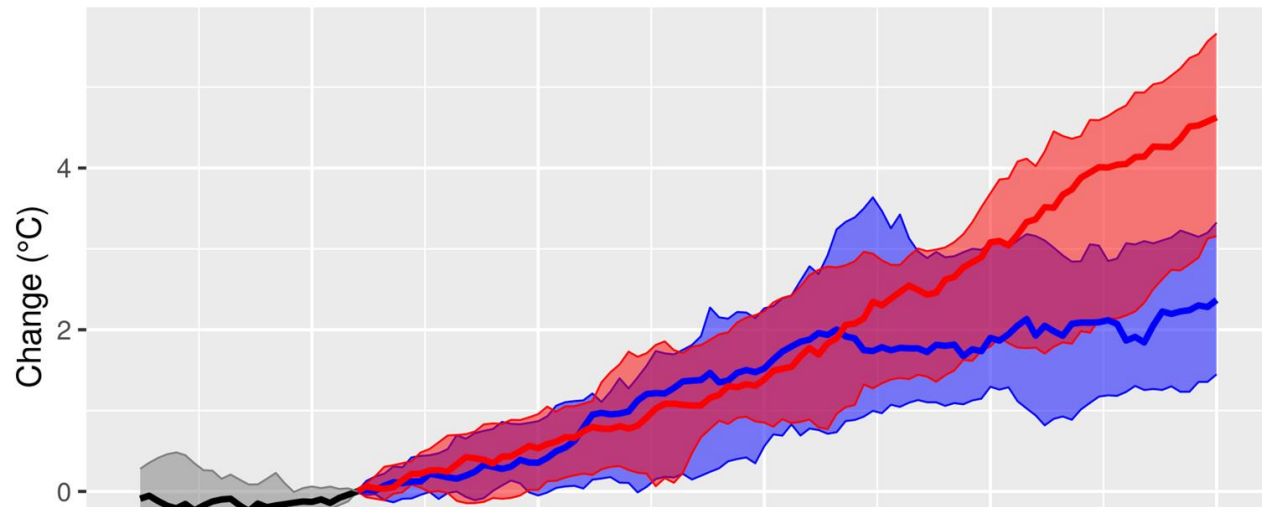


	RCP 4.5			RCP 8.5		
	2016-2040	2041-2070	2071-2100	2016-2040	2041-2070	2071-2100
Port of Aveiro (winter - °C)	+0.5 (+0/+1)	+1 (+0.5/+1.5)	+1.25 (+0.75/+2)	+0.5 (+0.25/+1)	+1.5 (+0.75/+2.25)	+2.5 (+1.75/+3.5)
Port of Aveiro (spring - °C)	+1 (+0.25/+1.5)	+1.75 (+1/+3)	+2.25 (+1.25/+3.5)	+1 (+0.5/+1.5)	+2 (+1.5/+4)	+3.75 (+2.5/+6)
Port of Aveiro (summer - °C)	+1 (+0.25/+2)	+1.5 (+0.5/+3)	+2 (+1/+4)	+1 (+0.25/+2)	+2.25 (+1.5/+4.5)	+3.5 (+2/+7.5)
Port of Aveiro (autumn - °C)	+1 (+0.5/+2)	+2 (+1/+3)	+2.25 (+1.5/+4)	+1 (+0.5/+2)	+2.5 (+1.75/+4)	+4 (+3/+6.5)

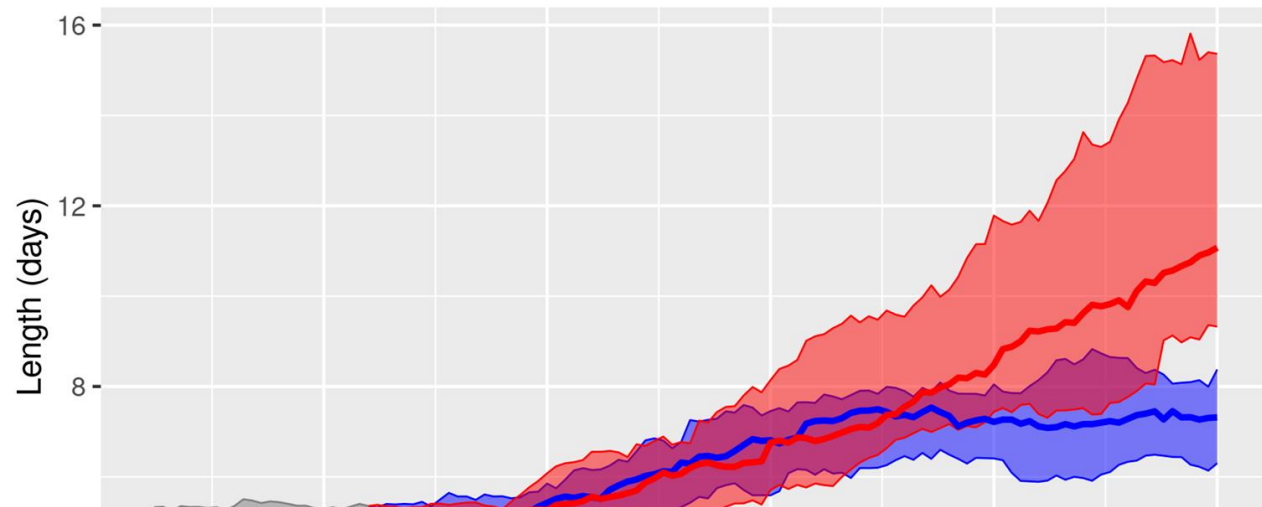
Most remarkable change in **AUTUMN**



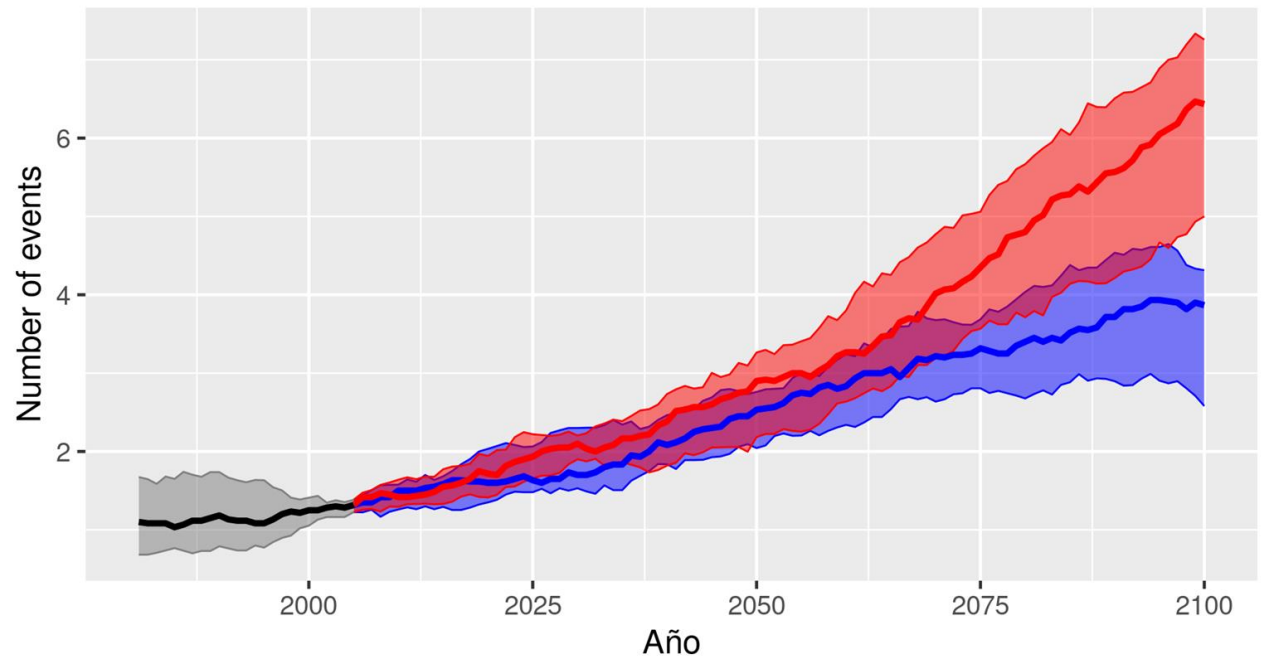
Maximum Temperature of the heat wave days



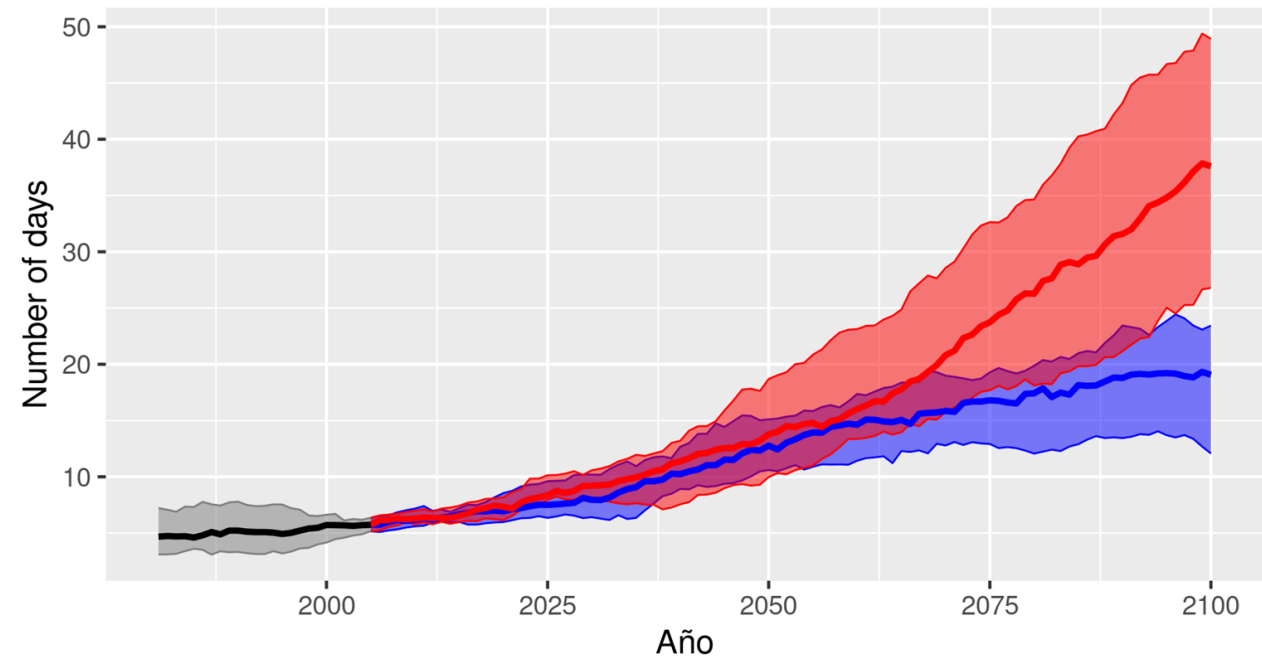
Maximum heat wave length



Number of heat waves per year



Number of days under a heat wave per year



— Historical — RCP45 — RCP85

— Historical — RCP45 — RCP85

5. ECCLIPSE - Heatwaves



Port of Aveiro

	Historical	RCP 4.5			RCP 8.5		
		2016-2040	2041-2070	2071-2100	2016-2040	2041-2070	2071-2100
Change in Intensity (°C)	31.5	+1.5 (+0.5/+2.2)	+1.8 (+1/+3)	+2.3 (+1.8/+3.2)	+1.3 (+1/+2)	+2.5 (+1.5/+3)	+4.5 (+3/+5.5)
Max. length (days)	5	6.5 (4.8/7.5)	7.7 (6.2/8)	7.5 (6/8.2)	6.5 (4.5/7.5)	8 (7.5/9)	11 (9.5/15.5)
Frequency (n° events)	1.2	2 (1.8/2.2)	3.2 (2.6/3.7)	4 (2.5/4.2)	2.2 (1.8/2.6)	4 (3.2/4.8)	6.5 (5/7.2)
Heatwave days	5	11 (9/30)	16 (13/19)	19 (12/24)	13 (8/32)	20 (15/27)	37 (27/49)