

PORT  TRACKER.CO

**REAL TIME MOVEMENTS**

**REAL TIME EMISSIONS**

**PORT EXPLORATION**

**BETTER PLANNING**

**LESS FUEL COSTS**

**REDUCED CARBON EMISSION**

# BENEFITS WITH PORTTRACKER.CO



**AIS  
NETWORK**



**FUEL  
SAVINGS**



**PORT  
EXPLORATION**



**DISPATCHING &  
UTILIZATION  
OPTIMIZATION**



**COMPLIANCE & RISK  
ASSESSMENT**



**MANEUVER  
ASSESSMENT**



**BEHAVIOUR  
CHANGE**



**BEST UTILIZATION**



**REPORTS &  
DATA MANAGEMENT**

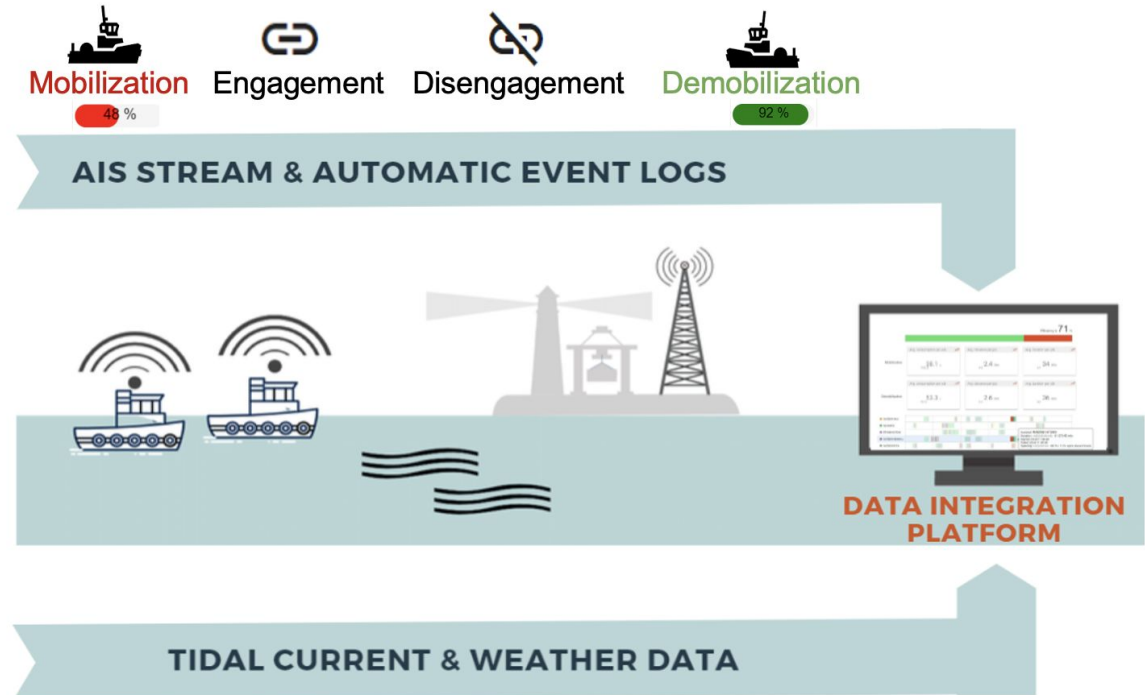


# AIS NETWORK

We help companies to set up their own AIS network if they don't have one. Producing own AIS Data has many advantages and also saves money.

The AIS Network can be installed on-shore or on the workboat itself, it is highly secured by Wireguard Firewall technology and reliable.

Our AIS Devices are based on Raspberry CM4 Modules and own PCBs and can be installed indoor, outdoor and on vessels





# AIS IoT DEVICE

- Raspberry CM4 Board
- POE compatible
- AIS Receiver (SRT or Weatherdock)
- Battery Management
- LAN - WIFI & mobile Network possible
- WIFI Hotspot
- Remote and local Webconfiguration interface
- Local AIS Plattform (SignalK compatible)
- SSD Hard Disks

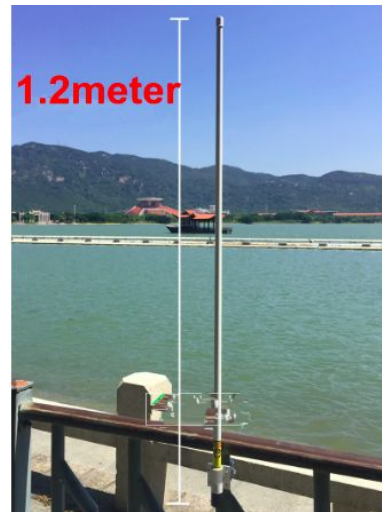
CKER.CO



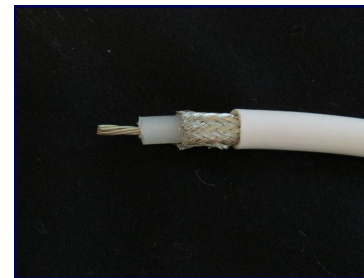
CM4 Rasperry, SRT Receiver, POE compatible



POE Switch



simple Standard Marine VHF/AIS Antenna



RG-58U, RG-8X, or RG-213 Tradeoff - thickness vs length



Yagi Antenna for wider reception on coastline



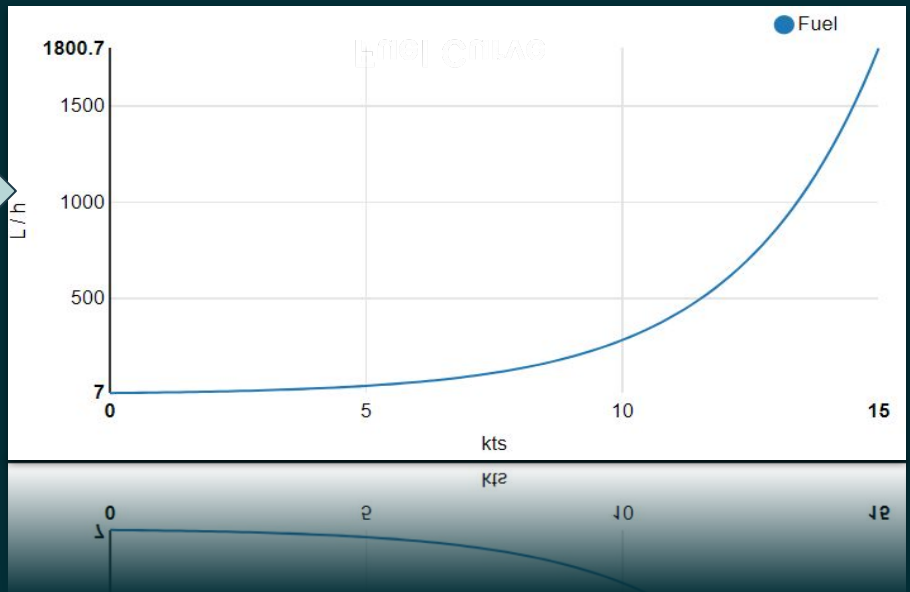


# FUEL EFFICIENCY

Our patented AI algorithm can calculate the fuel consumption of your fleet and shows you optimisation potential by combining real-time positional, tidal, weather and engine data.

Here imminent savings in fuel cost can be realized

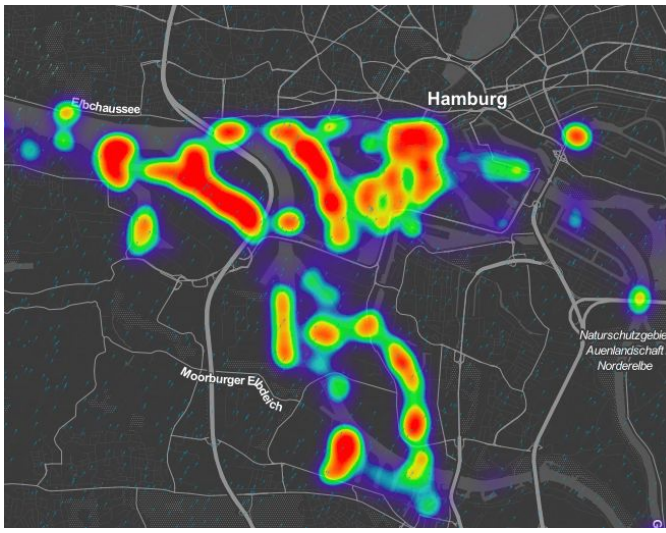
### Fuel Curve



# CO2 Dashboard

For enviromental regulations you can generate Co2 Reports easily and also demonstrate the Co2 footprint of every portcall

Overview





# Port Exploration

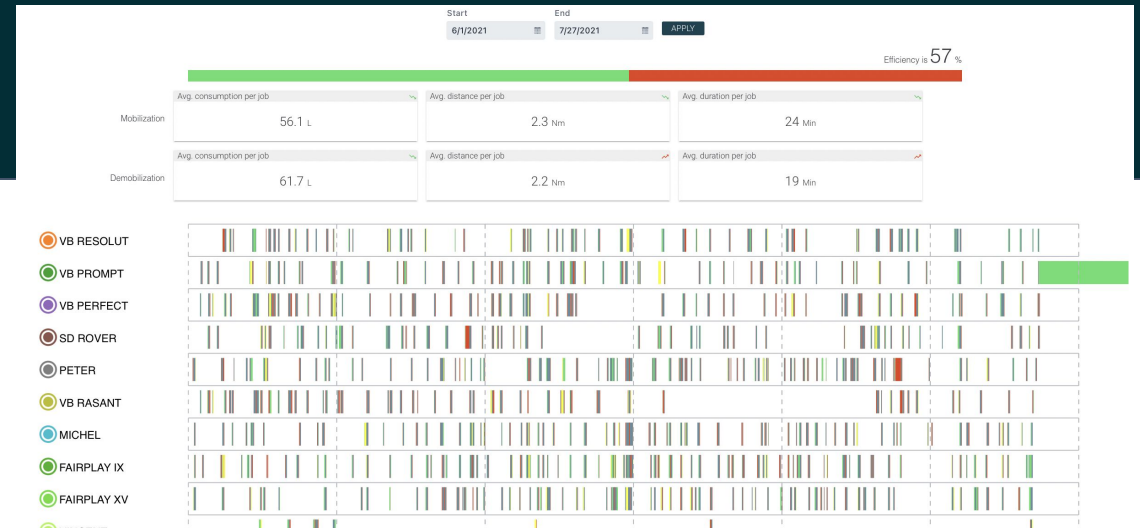
- Understand the market share and trends and get more insights about competitor assessments.
- Generate new business opportunities in ports you already serve or find new territories with the help of better data about port traffic and revenue expectations.

Jobs	Green (3)	Yellow (2)	Red (1)	Eco acc... (total/jobs)	actual vessel fuel used (litres)	Potential fuel savings missed (litres)	Total actual fuel cost (US \$)	Total potential cost saving missed (US \$)	Total CO2 produced (tons)	Potential CO2 savings missed (tons)	Optimum Costs (Delta Actual Poten... Savings)
7	1	4	2	61%	11511	6061	\$599	\$315	3.131	1.651	\$264
25	6	6	13	57%	25261	10951	\$1,314	\$654	6.871	2.951	\$760
3	0	6	3	33%	27111	21601	\$1,410	\$1,123	7.281	5.881	\$287
1	0	0	1	33%	8211	5871	\$427	\$295	2.231	1.541	\$132
2	1	0	1	66%	12841	8071	\$668	\$466	3.491	2.441	\$202
5	1	3	1	66%	10101	6311	\$525	\$329	2.751	1.721	\$198
1	0	0	1	33%	1631	731	\$95	\$38	0.501	0.201	\$57
26	2	10	14	51%	32151	12441	\$1,672	\$647	8.751	3.381	\$1,025
1	0	1	1	66%	1061	171	\$55	\$9	0.291	0.051	\$46
17	5	4	8	60%	12361	4081	\$643	\$212	3.361	1.111	\$430
25	4	9	12	56%	27391	13221	\$1,424	\$687	7.451	3.601	\$737
26	4	10	12	56%	21731	8961	\$1,130	\$357	5.911	1.871	\$773
20	10	7	2	78%	13971	4631	\$728	\$241	3.801	1.261	\$465
20	2	5	13	48%	32401	15561	\$1,685	\$809	8.821	4.231	\$876
23	3	5	16	49%	40851	17431	\$2,114	\$907	11.061	4.741	\$1,207
11	1	5	5	54%	13091	3571	\$680	\$186	3.561	0.971	\$405
2	0	1	1	50%	2031	691	\$108	\$36	0.551	0.191	\$70
18	6	6	6	66%	15761	5941	\$820	\$309	4.291	1.621	\$511
23	4	9	10	57%	25721	11511	\$1,338	\$598	7.001	3.151	\$739
18	6	6	6	66%	12501	3821	\$650	\$199	3.401	1.041	\$451
21	5	12	4	68%	11881	2521	\$618	\$131	3.231	0.691	\$487
18	4	5	9	57%	14151	4141	\$736	\$215	3.851	1.131	\$520



# COMPLIANCE & Risk Assessment

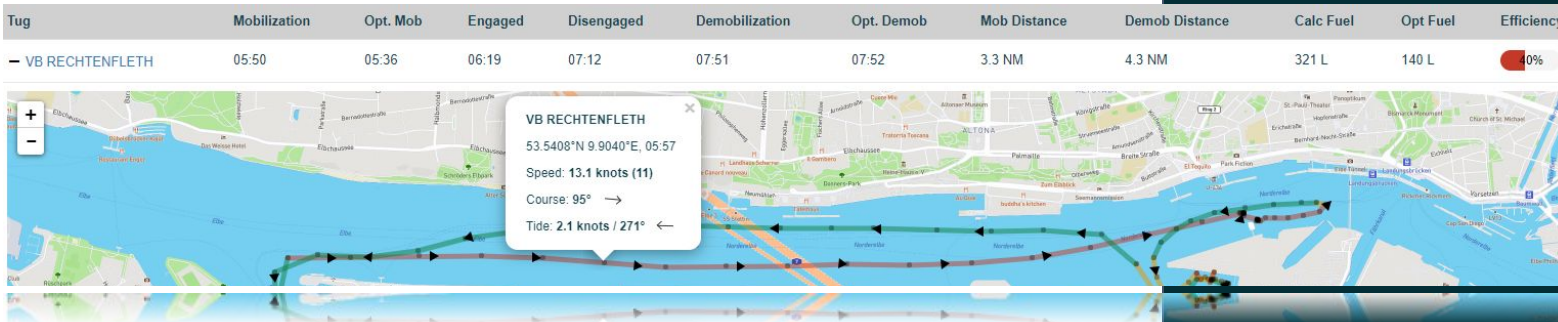
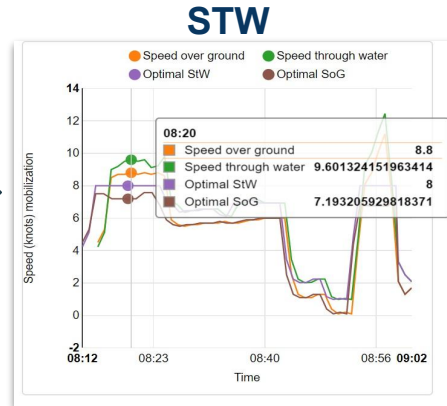
- Get a better understanding about the ships that are coming and with what operators, managers and owners you are dealing.
- Put a red flag on unwanted vessels or clients.





# Maneuver Assessment

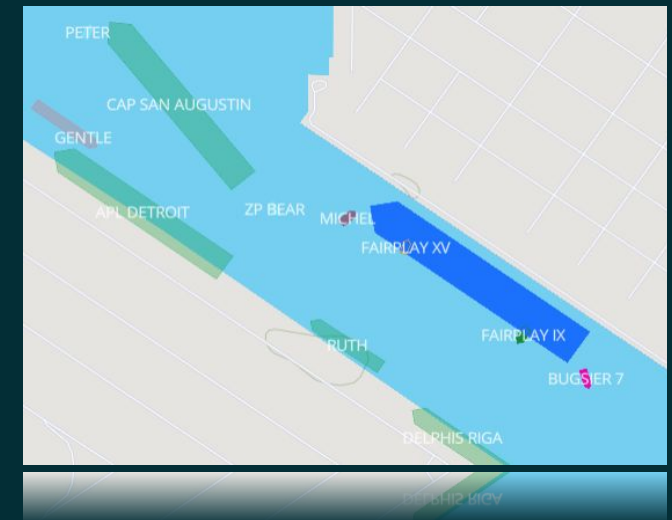
Archive the Tracking Data for all jobs within the cloud and use them for various purpose, such as trainingsessions, maneuver assessments and also accident investigations.



# Reports & Data Management

In many cases your data is distributed into many files that are owned by many people.

Our solution is the starting point for setting up a centralized knowledge base for your operational data.





# Dispatching & Utilization Optimization

Make use of the OR and ML powered dispatching solution to optimize the utilization of your fleet based on actual ETA, ETB and ETD Data.

Name	Tasks	08	09	10	11	12
TA Tug A workboat	1	→ Vessel X				
TB Tug B workboat	1		→ Vessel Z			
TC Tug C workboat	1	→ Vessel Y				

**Vessel Z**

- 📍 Dec 1, 2021 9:30 AM
- 📍 Dec 1, 2021 12:30 PM

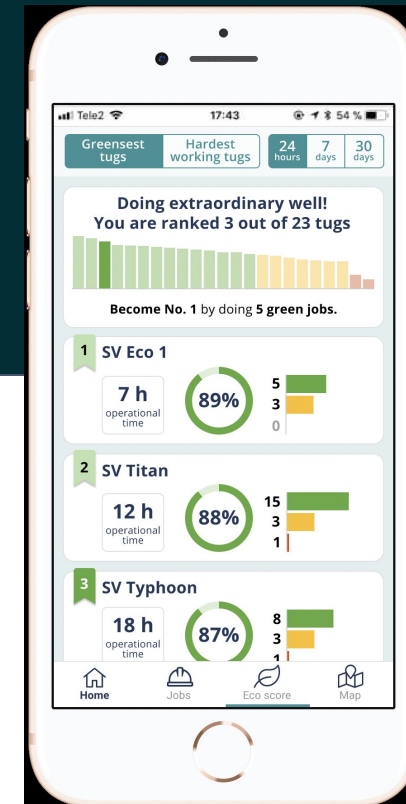
$$\sum_{h \in H} \sum_{j \in \delta^+(i)} x_{h,i,j} = I(i) \quad \forall v \in V_1, i \in P_v$$

$$\sum_{h \in H} \sum_{j \in \delta^+(b_v)} x_{h,b_v,j} = \Gamma_v \quad \forall v \in V_1$$



# BEHAVIOUR CHANGE/ Nudging

Send performance Reports to your captains and masters. They immediately get response and feedback for their sailing behaviour.







# API based Design

portcallapi.com feeds our Apps with data and functionality.

Endpoint that are available:

- ETA / ETD
- Mooring / Unmooring Times
- ECO Score & Co2 Emissions
- Tugboat Events
- Pilot Events
- Tides & Waterlevels

portcallapi.com

Ready To Turn The  
API Revolution To  
Your Advantage?

We give you the data - you design your tools

Learn More >

- Developed by Navisense -

Navisense

# YOUR CONTACTS



**CARSTEN BULLEMER**  
OWNER & CEO



[carsten@navisense.de](mailto:carsten@navisense.de)



+49 162 946 02 80