

TuginMotion[®]

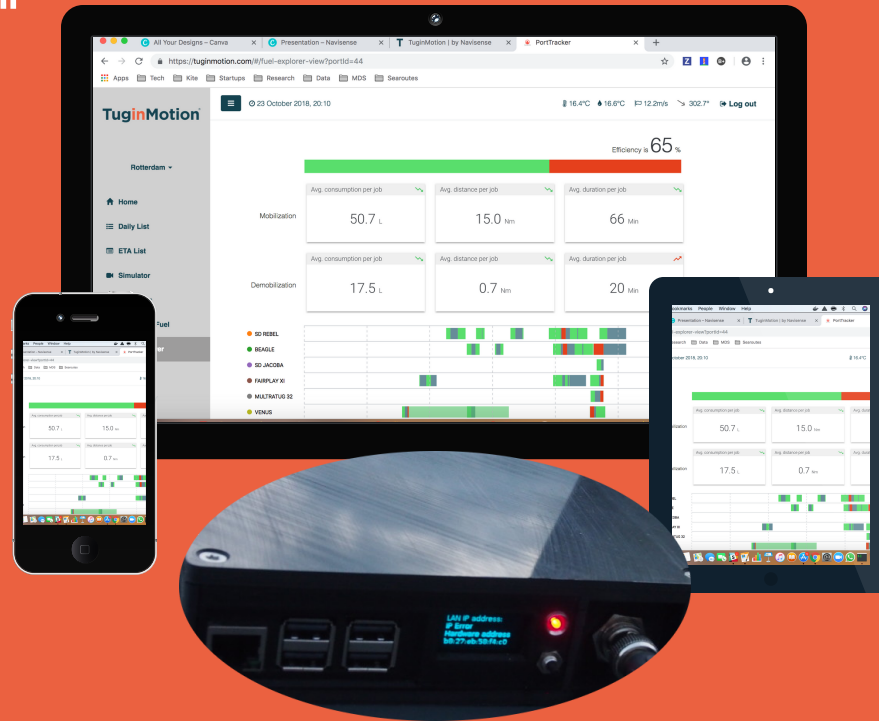
BUNKER REDUCTION
TUG FLEET OPTIMISATION
PORT MONITORING

2019 Q1

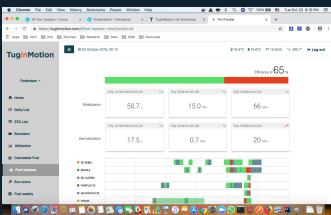
NAVISENSE

COMPANY PURPOSE

"WE HELP TUG FLEET MANAGERS SAVE FUEL, OPTIMIZE UTILIZATION, MONITOR COMPETITION AND REDUCE RISKS + DELAYS AND COLLECT DATA FOR TUGS AND ENVIROMENT"



THE PROBLEM



ACCURATE MEASUREMENTS OF FUEL CONSUMPTIONS WITHOUT EXPENSIVE SENSOR INSTALLATION

OPTIMIZE YOUR FLEET UTILIZATION AND HAVE AN EYE ON CUSTOMERS & COMPETITION IN YOUR PORT

COLLECT ENGINE, FUEL, TIDE, ROPE AND BATHYMETRY DATA

EXTENSIVE MEETINGS:

- . MASTERS
- . FLEET MANAGERS
- . PORT OPERATION MANAGERS
- CONTROLLERS



TUG FLEET DEPLOYMENT & MONITORING **IS MANUAL, EXPENSIVE & NOT ACCESSIBLE.**

THE SOLUTION

A TUG FLEET OPTIMIZATION SOLUTION BASED ON IOT, AIS, MACHINE LEARNING AND PROPRIETARY TIDE MODELS.

WEB

API

IOT



- + FUEL CURVES
- + OPTIMAL MOVEMENTS
- + ...



- + TIDE CURRENTS
- + WEATHER
- + BATHYMETRY
- + ...



+ ...



- + DEEP LEARNING ALGO
- + LIVE VESSEL POSITIONS
- + HISTORY OF TUG EVENTS



WE SAVE FUEL & REDUCE EMISSIONS FOR TUGS IN EVERY PORT & COLLECT DATA

THE MARKET OF PORT TOWAGE MARKET

50K GLOBAL MERCHANT FLEET (ICS, 2018)
18% IDLE (BLOOMBERG, 2017), 70% TUG NEED
60 PORTCALLS PER YEAR PER VESSEL (VESSELTRACKER.COM)
~6.1 MRD USD MARKET PER YEAR

X



PORTS

750 PORTS
WITH TUGBOATS



FLEET

150 TUGOWNERS



OWNERS &
CHARTERERS

45.000 VESSELS
SHIPOWNERS
CHARTERERS

MARITIME TREND

SHIPPING CRISIS

CO2 EMISSION
REGULATION

2020 IMO GLOBAL
SULPHUR LIMIT

INCREASE OF
BUNKERING COSTS

PORT CONGESTION
DUE TO CLIMATE
EVENTS

TRANSPARENCY &
TRACKING DEMAND



TECHNOLOGY TREND

GLOBAL INTERNET
COVERAGE

IOT GROWTH IN THE
LOGISTICS

BIRTH OF THE B2D
ECONOMY

ML ALGORITHMS

BETTER DATA SETS

REVENUE MODEL

premium online + api pool

Add-ons -- Onboard + Onshore

License -- Third party applications.

- Detection of tug jobs
- Fuel & Emission CALC
- Benchmark & Eco Score
- Competitor Tracking

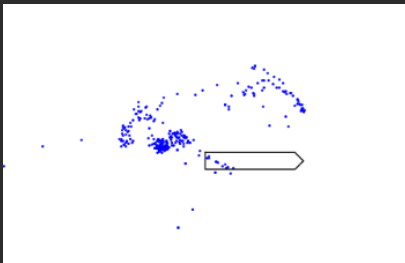
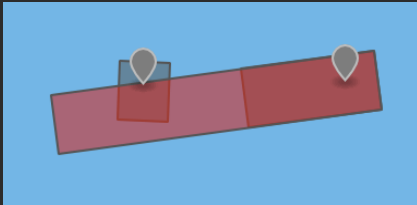
Next:

- Planning Decision Support
- Mobile Service Integration
- other service monitoring

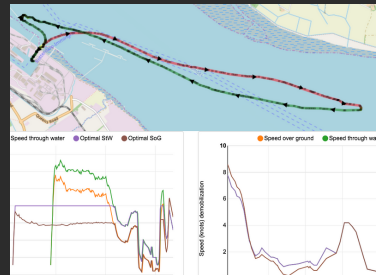
WHY IS TUGINMOTION.COM SPECIAL?

CUTTING EDGE TECH STACK FOR ONLINE + OFFLINE
DETECTING REAL TIME PORT EVENTS BASED ON AIS DATA STREAMS

A. DOCKING EVENTS



B. FUEL CALCULATION



C. PORT MONITORING



THE TEAM



CEO CARSTEN BULLEMER



CTO PIERRE GARREAU, PH.D.



COO JONAS WEISSENFEL

EDUCATION

UNIVERSITY COLOGNE

ECOLE CENTRALE LYON
CORNELL UNIVERSITY
UC LOS ANGELES

UNIVERSITY HAMBURG

CAREER

GENSCAPE
VESSELTRACKER

DEUTSCHE BANK
CITIGROUP

IBM
MARITIME DATA SYSTEMS

WIND, BOAT

25 KTS, WINDSURF

18 KTS, HOBBY CAT

12 KTS, 36 FOOTER

FOUNDEREXP

3 YEARS OF JOINT WORK

CLIENTS, PORTS & FINANCIALS

CLIENTS:

SVITZER, URAG

PORTS:

Belfast, Bristol, Immingham, Liverpool, London. Milford, Southhampton, Swansea, Gydinia

more Ports:

Singapore, Antwerp, Hamburg, Rotterdam

REVENUE:

250k per year

MARKETING & DEV ROADMAP 2019

MARKETING

HIRE SALES PERSON

VISIT TRADESHOWS

MAKE ONLINE PRESENTATIONS

DEVELOPMENT

PLANNING MODUL

PLANNING DECISION SUPPORT

MOBILE DEVICE & EMAIL REPORTS

MORE SERVICE MONITORING

In 5 years, **tuginmotion** will be the global no.1 tug fleet monitoring and optimization solution.

Tuginmotion.com could help cut fuel consumption in ports by 15%. Are you ready?

TuginMotion[®]